



CORPORATE PROFILE

BRADFORD



TIMELESS. DURABLE. STAINLESS. SINCE 1982.



Contents

- About Bradford4 - 13
- Bradford Capabilities 14 - 23
- Project Profiles 24 - 49
- Product Gallery50 - 67



Who We Are

We are the creators of the finest stainless steel pools, spas and water features in the world.

With over 10,000 installations completed, Bradford products are featured in facilities and homes throughout the U.S. and abroad.

We work with aquatic designers, architects, owners and developers, custom home builders, general contractors, pool builders, and designers to create sensational, long lasting stainless steel aquatic vessels.

Our Core Values

Founded in 1982, Bradford has established itself as the worldwide leader in stainless steel aquatics based on the following core values:

Family

Three generations of the Brodeur family and an extended family of employees bring your vision to life.

Made In America

Bradford was founded on the fundamentals of American craftsmanship and ingenuity. We strive to source all materials and components from other American-made companies.

Stainless Steel

Nobody does it better than the masters of stainless steel aquatic design and fabrication for over 40 years. We use only high quality stainless steel to build our vessels.

Artistry

Neither form nor function is ever compromised; elegant designs are born through rigorous engineering and proven manufacturing methods.

Quality

Nothing is as timeless and durable as a fully welded, Bradford stainless steel aquatic vessel.

Leadership

Bradford continuously drives innovation in the stainless steel aquatics industry.

Custom Design

The possibilities in design and our capabilities in manufacturing are virtually limitless.

Partnership

Every client is our partner. From design to manufacturing through installation, we are with you every step of the way.

Problem Solving

No matter what your vision or challenge, Bradford can make it come to life in beautiful stainless steel.



Company Statistics

- Founded in 1982.
- Highly mobile workforce consisting of over 175 skilled employees.
- Two facilities totaling over 200,000 square feet of manufacturing space in North Carolina, USA.
- ISO 9001 Certified facility.
- AWS Certified (American Welding Society) Welders.
- In-house skilled tradesmen: mechanical, electrical, plumbing, and tile work.
- In-house professional staff: engineering, sales, quality control, procurement, accounting, design, project management, customer service.
- IAPMO (International Association of Plumbing and Mechanical Officials) certification on select vessels.
- Over 10,000 stainless steel vessels completed worldwide.
- Certified Fabricator for Miami-Dade County, Florida and Clark County, Nevada.
- All Bradford vessels are built with high quality, American-milled stainless steel.





Bradford's Process

Consulting

We connect your unique vision with function, cutting edge design, brilliant aesthetics, safety, and practical usability for every aquatic vessel we create.

Concept Design

We provide detailed drawings of all electrical and plumbing schematics, hydraulic requirements and material lists, preparing you to implement a successful project. 3D model illustrations are also available to visualize your unique concept.

Project Management

Your Project Manager is your point of contact throughout the rest of the process. From backyard spas to expansive rooftop pools, every project gets individual attention and dedicated management from Bradford.

Engineering

Our engineers develop highly detailed, complete CAD drawings before a single piece of steel is fabricated, ensuring exacting tolerances, precise measurements, and a fully accurate reflection of your design.

Fabrication

In our factory controlled manufacturing facilities, stainless steel is CNC laser cut, brake formed, welded and assembled. Water testing, passivation, tiling and plumbing complete the process. We maintain ISO 9001 and IAPMO certifications and adhere to ASME, ANSI, and NSF standards. Our welders are American Welding Society (AWS) Certified.

Shipment & Delivery

Vessels are shipped in one finished piece or modular sections depending on access and site conditions. Our prefabrication process accounts for on-site requirements, such as crane weight limitations or logistical restrictions.

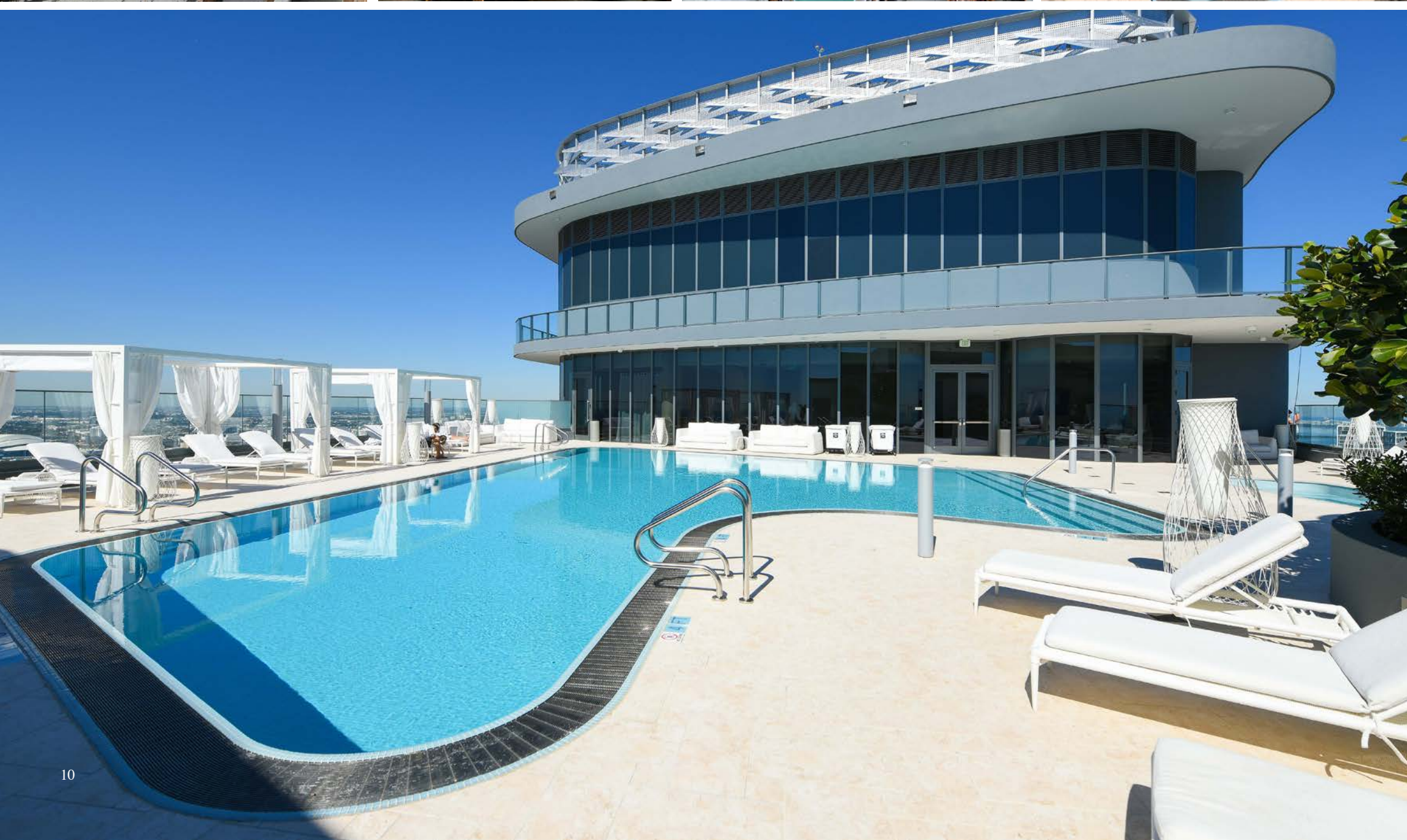
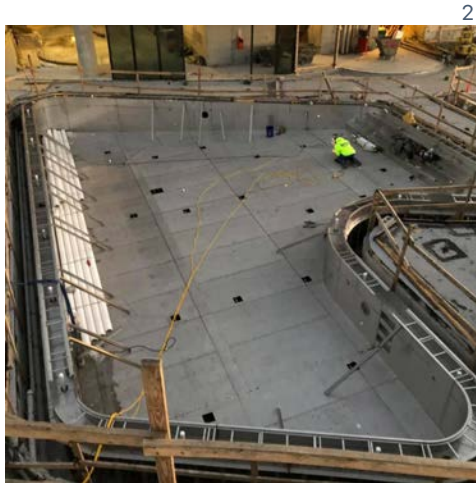
Installation

We are here to assist you as much or as little as required. Our highly mobile team of skilled craftsmen is equipped to complete any additional welding, plumbing, tiling, or finishing needed for on-site installation. We also partner with local pool builders to deliver complete turn-key aquatic systems.

Maintenance & Support

Reliable performance is a cornerstone of our company culture, which is why all of our stainless steel aquatic vessels carry a 25-year warranty. Should you need any assistance, Bradford's customer service team is always here to help.





Bradford in Action

Level 64 Brickell Flatiron - Miami, Florida

The tallest residential building south of Manhattan, Brickell Flatiron is designed with a distinct, curvilinear style. The rounded corners and organic footprints of the vessels mimic the curving facade of the 64-story, 527-unit tower.

Bradford fabricated and installed two large-scale commercial pools, one kiddie pool, two residential penthouse pools, and one commercial spa on the 18th and 64th floors of Brickell Flatiron.

1. Bradford's pool sections are craned up and set in place on the 64th floor.
2. Bradford's welders arrive on-site and weld the pool sections together.
3. Once fully welded, the vessel is hydrostatically pressure tested.
4. After passing the water pressure test the vessel is drained and tile is adhered.
5. Once the tile is cured our process is complete and the pool is ready to be filled and opened for use.

Vessels by Surface Area and Volume:

Level 64 Pool (Pictured): 1,507 ft² / 45,804 gallons

Level 64 Spa : 143 ft² / 2,200 gallons

Level 64 Penthouse Pool 1: 195 ft² / 4,781 gallons

Level 64 Penthouse Pool 2: 195 ft² / 4,781 gallons

Level 18 Lap Pool: 1,006 ft² / 31,920 gallons

Level 18 Kiddie Pool: 63 ft² / 448 gallons



The Bradford Stainless Steel Difference

Lighter, Faster, Stronger

Bradford stainless steel aquatic vessels are one third to one fourth the weight of traditional concrete or shotcrete vessels. Bradford vessels are fully installed in a fraction of the time required for concrete and are impressively strong to bear any structural or seismic forces.

Precision Engineering

Bradford stainless steel pools and spas are precision engineered to ensure they fit perfectly every time.

Watertight Welded Integrity

Bradford pools and spas are fully welded and are hydrostatically tested to ensure 100% watertight performance.

Reduced Weight Loads & Structural Costs

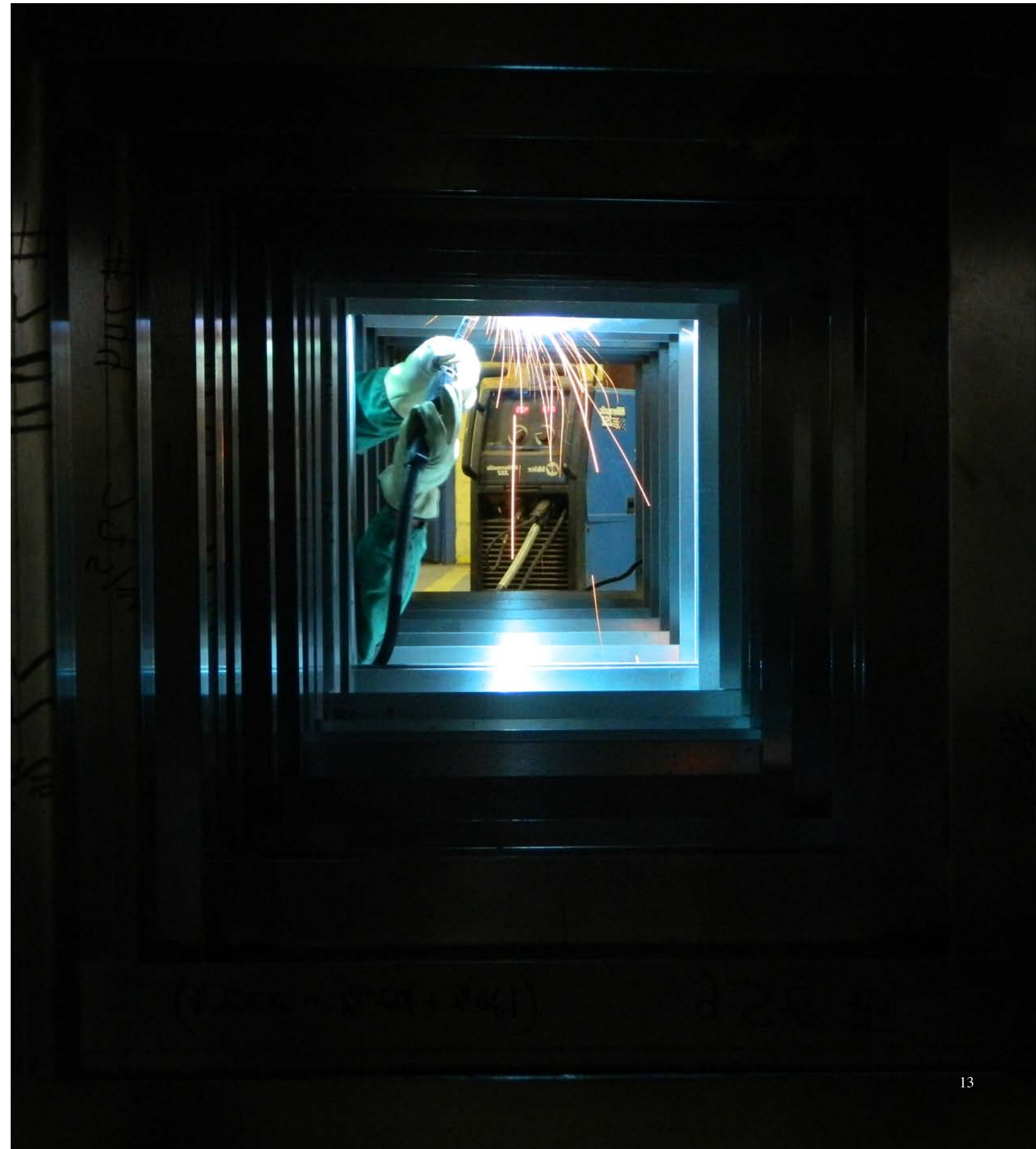
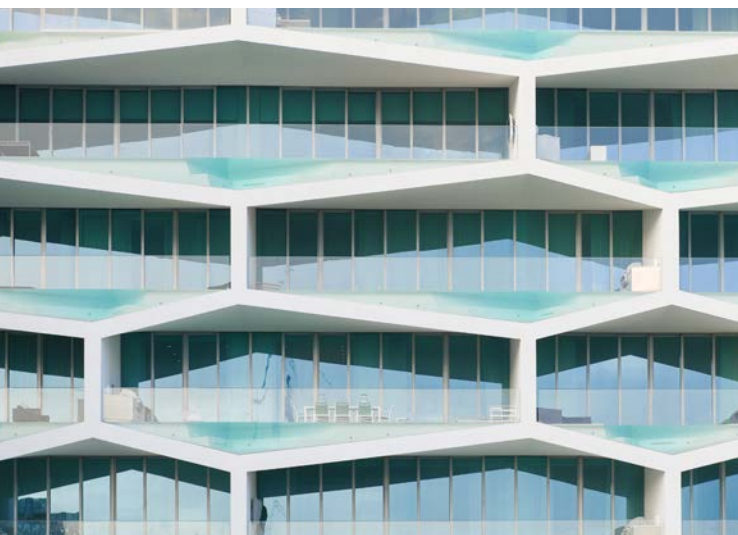
The tremendous weight savings of a Bradford stainless steel aquatic vessel versus concrete significantly decreases the structural requirements of the building. This saves head space, reduces costs, and simplifies installation.

Installation Savings

Bradford stainless steel pools and spas are fully prefabricated then delivered to the site in one or multiple pieces. Even the largest and most complicated pools can be fully installed in a matter of weeks instead of the months required for concrete, significantly reducing on-site time, labor, and costs.

25-Year Warranty

Every Bradford stainless steel shell is warranted against corrosion to perforation for an industry-leading 25 years.





Bradford Capabilities

From backyard spas to multi-vessel pool decks on the Las Vegas Strip, Bradford follows the same exacting processes to create extraordinary stainless steel pools and spas for every application. *If it can be imagined ... we can build it.*

Our Products

Pools

Watertight and weighing a fraction of a concrete vessel, our pools are sleek, durable, and ideal in elevated environments.

Spas

Bradford spas are carefully handcrafted, fusing timeless stainless steel and sophisticated tile to create the most elegant and unique hot tubs in the world.

Acrylic Panel Pools & Spas

Precision engineered Bradford vessels are ideal for incorporating acrylic viewing windows for a thrilling, unexpected experience.

Resistance Swimming

Our SwimSpas are featured in the world's finest aquatic facilities and private homes for a tailored fitness experience.

Hydrotherapy Pools & Spas

Our hydrotherapy pools and spas offer options that are tailored to unique therapy or treatment goals.

Water | FX & Fire | FX

Designed to complement any space, our water and fire features are uniquely stunning as integrated or standalone elements.

Heated Loungers

Bradford Heated Loungers are the ultimate place to relax. Our custom tiled loungers provide a low maintenance, hygienic addition to any day spa or residential relaxation space.

Competition Pools

Our modular, bolt-together sport pools provide unlimited project potential while reducing installation time, performance downtime, operating expenses, and maintenance.

Lazy Rivers & Lagoons

Made from lightweight, low maintenance stainless steel panels, our highly durable lazy rivers and lagoon pools are the ideal solution for high-traffic water parks and resorts.

Hydrothermal Amenities

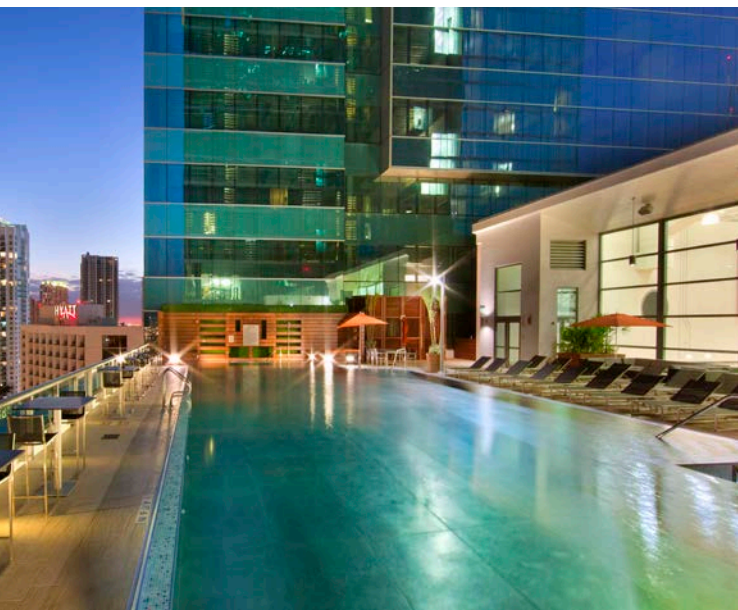
Bradford Wellness & Spa is a provider of custom, luxury wellness amenities for private residences and day spas worldwide.



Market Segments

- Hospitality
- Fitness & Athletics
- Residential
- Casinos & Resorts
- Multi-Family
- Hydrotherapy
- Student Housing
- Healthcare
- Day Spas
- Sport & Competition
- Municipal
- Waterparks
- Marine





The Bradford Advantage

Reduced Liability, Increased Peace of Mind

All Bradford stainless steel pools and spas are warranted against corrosion to perforation for 25 years. All vessels are hydrostatically tested for leaks prior to commissioning, which significantly reduces the potential leak risks and liabilities associated with elevated pools over occupied space.

Simplified Structures

The significant reduction in the support structures required for a Bradford stainless steel vessel frees up valuable head space and simplifies installation. When renovating existing structures that may have limited support capacity, the weight savings of stainless steel allows for expanded design and larger bodies of water.

No Surprises

Every Bradford vessel is precision engineered, modeled and fabricated to exacting tolerances to ensure a perfect fit. This eliminates costly on-site re-work and change orders, and delivers a fully accurate reflection of the intended design.

Time & Labor Savings

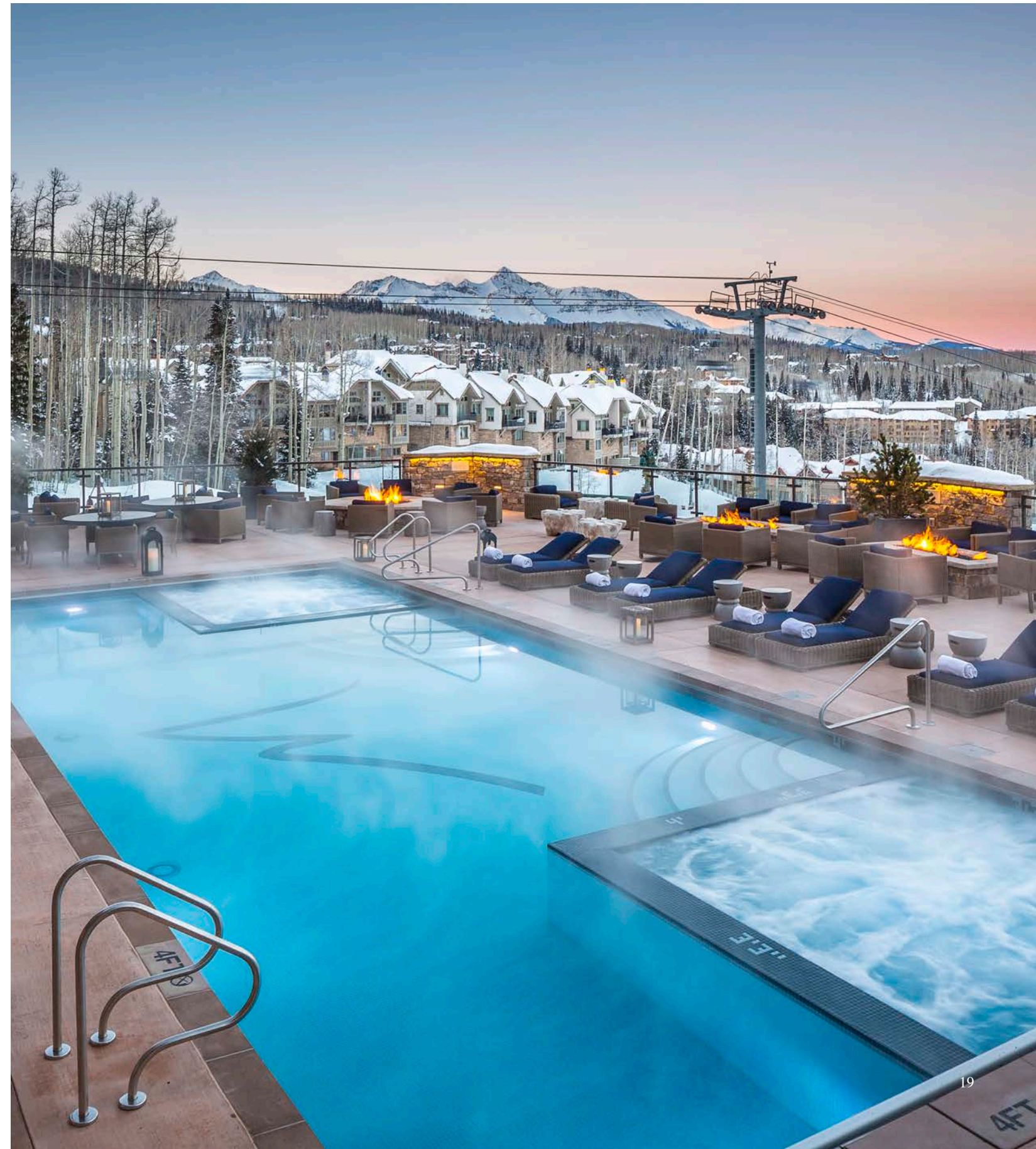
Installing a Bradford stainless steel pool requires far less labor and time versus building a traditional pool. Our work is largely unaffected by weather or climate, freeing up valuable resources in the construction schedule and avoiding costly delays.

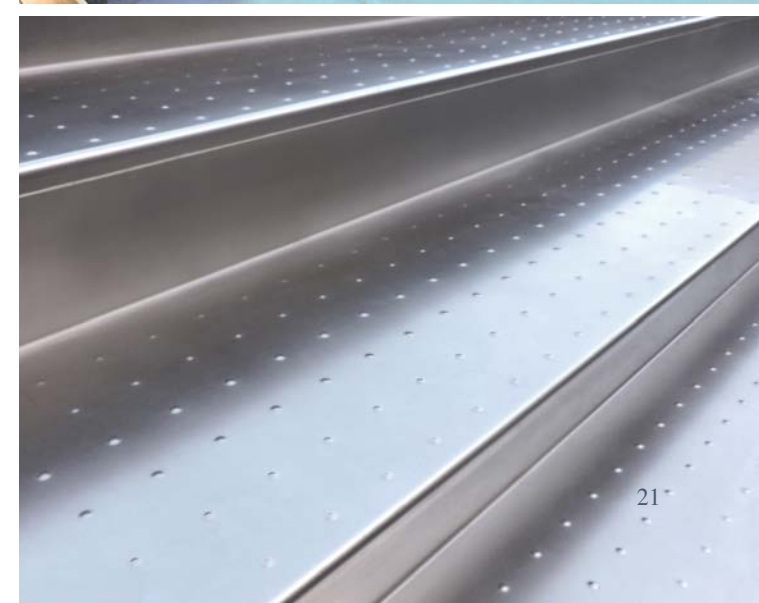
Plumbing Simplified

Bradford vessels are fully pre-plumbed to stub-outs. Essential plumbing remains accessible during and after construction.

Details

Free-form shapes, intricate details, and critical structures are all completed in our factory to exacting tolerances. Vessels can be finished in full tile, tile trim, all stainless, or dimpled stainless.





Bradford Innovation

Born from Curiosity. Built for Permanence.

We are, at our core, innovators. The desire to develop better products, find better solutions, and create better vessels are the fundamental driving forces behind our company.

Problems Solved in Stainless

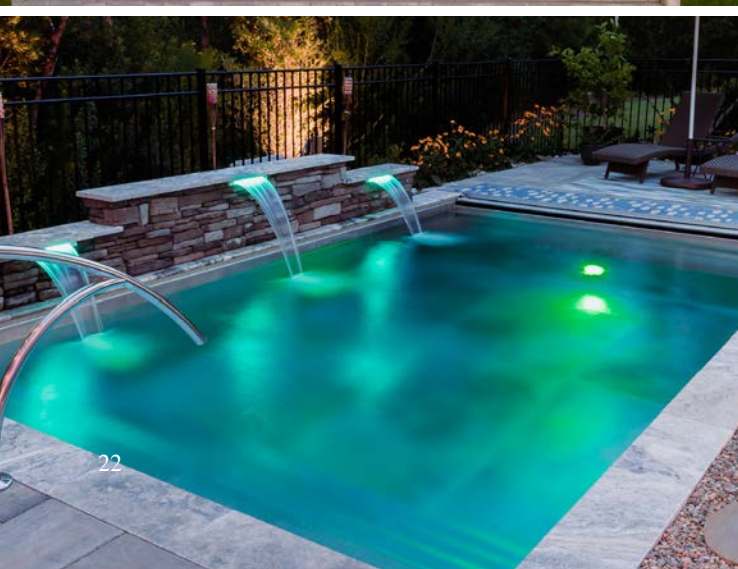
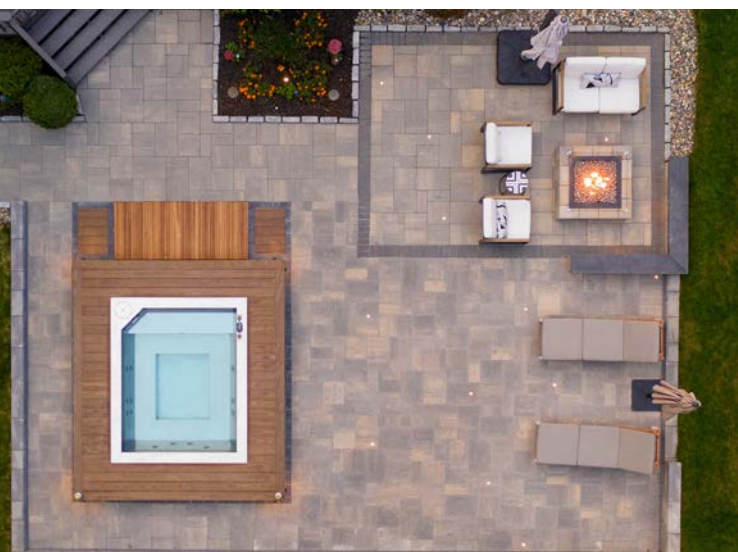
At Bradford, we never limit ourselves to “off the shelf” solutions. If the ideal design and performance is best achieved with durable, sustainable stainless steel, then Bradford makes it happen.

Custom Features

No challenge is too big or too small. When it comes to creating stunning, high performance aquatic features, Bradford’s unparalleled expertise in stainless steel fabrication brings excellence to life.

Better by Bradford

UL Listed Light Niches	UL Listed Skimmers
UL Listed VGB Drains	All Stainless Jets & Returns
NSF Listed Skimmers	All Stainless Gutter Systems



Bradford Home

Bradford Home is our collection of stainless steel pool and spa solutions designed and engineered for residential use. The vessels in this collection offer homeowners a variety of standardized options for stainless steel pools and spas with shorter lead times and competitive pricing as compared to our custom vessels.

www.BradfordHome.com

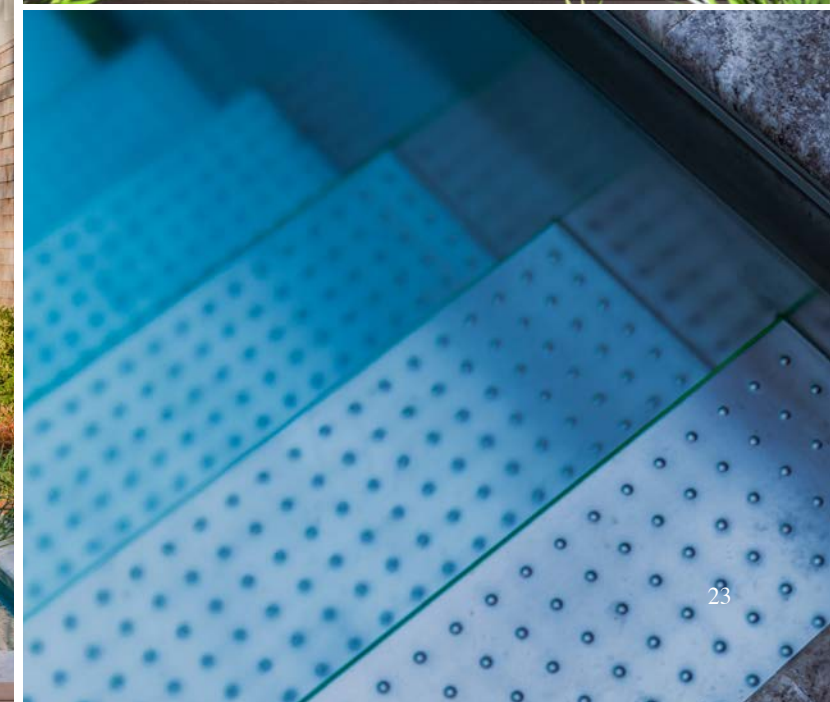
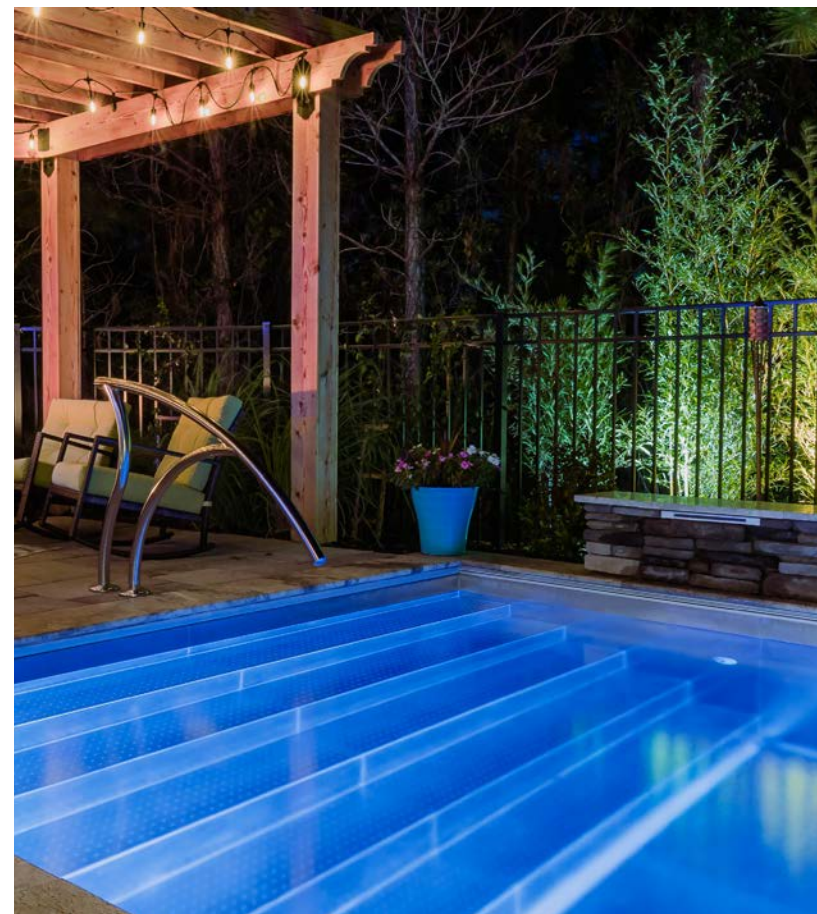
The MPool

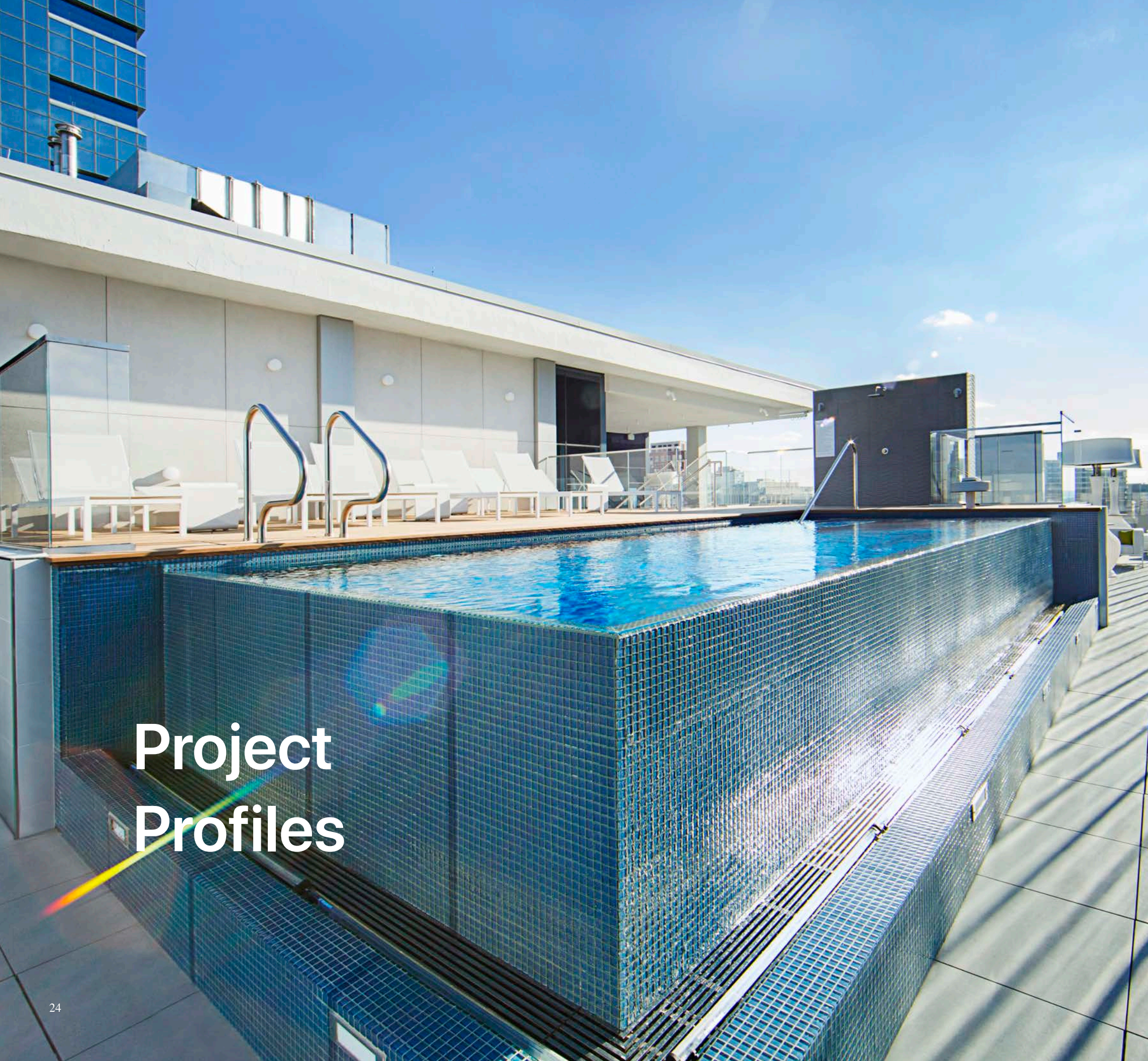
Elegantly designed and thoughtfully constructed, the MPool is Bradford's first fully welded stainless steel pool designed specifically for residential in-ground installation. The MPool's customizable lengths and selection of in-pool features allow homeowners the flexibility to design a pool to fit their needs while maintaining quick turnaround times and cost effective manufacturing practices.

The MPool is available in skimmer and infinity edge designs. With five lengths between 20 and 40 feet, the MPool was designed with a constant width of 12 feet to ship as a standard wide load.

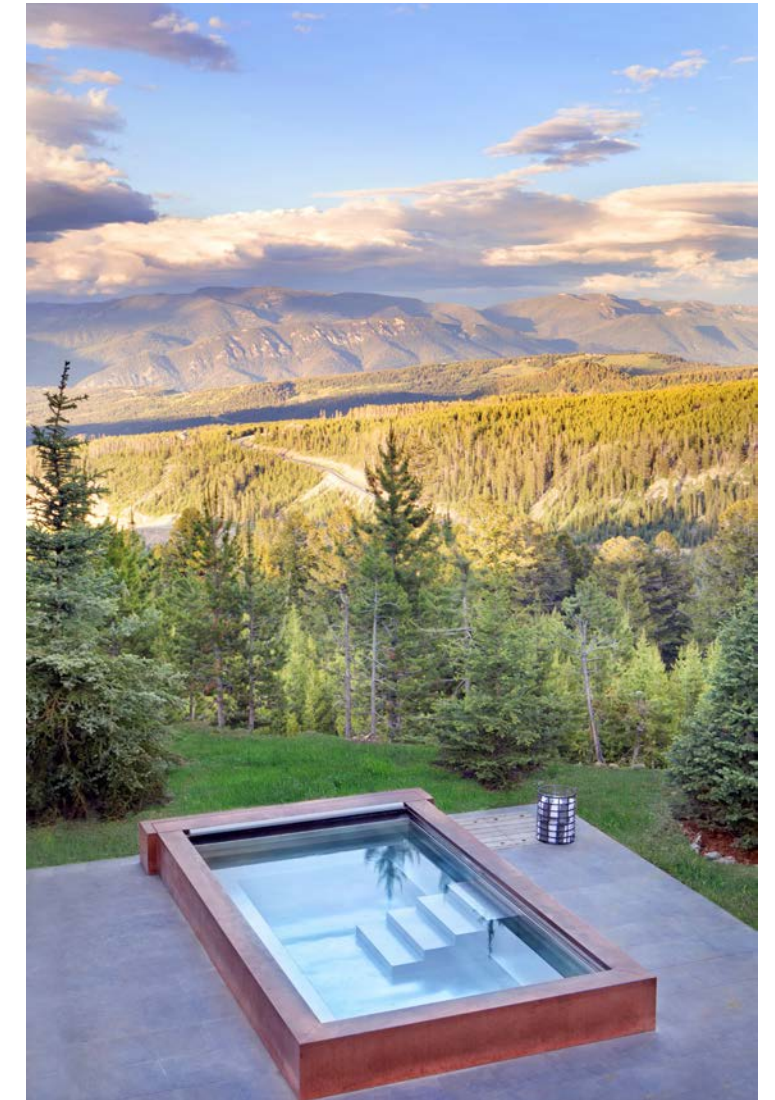
Signature Series Spas

Our line of Signature Series Spas is a collection of our best-selling shapes and options. Homeowners choose their spa shape, finish, and equipment from a variety of preselected options for a spa that is both tailored to their needs and manufactured efficiently.





Project Profiles



Our Work

Find us anywhere, everywhere

Bradford's highly mobile workforce has performed installations all over the world in all types of environments. Our team of highly skilled, expert craftsman are trained and experienced in the complexities of working outside of our shop.

Bradford's rooftop pools and spas crown extraordinary buildings domestically and internationally. Our residential work is commissioned by renowned architects and builders for the duality of its strength and artistry.

The adaptability of our fabrication techniques allows our pools and spas to be installed in limited-access settings. Modular, pre-fabricated sections are sized to fit freight elevators, helicoptered to the rooftops of existing buildings, and transported anywhere in the world.

Albany Marina Residences

Nassau, The Bahamas

Located in the exclusive luxury community, Albany Bahamas, The Marina Residences are a collection of eight sophisticated, private residential buildings that surround the marina.

Each building's distinct architectural style is a result of unique design by the world's foremost architects. Bradford's stainless steel pools and spas can be found throughout the eight buildings, most integrated into the building's design, others added by private owners after sale.

The Honeycomb

34 Stainless Steel Spas

4 Design Variations

Full Facade Acrylic Windows

The Cube

22 Stainless Steel Spas

9 Design Variations

Full Facade Acrylic Windows

Tetris

23 Stainless Steel Spas

Squire

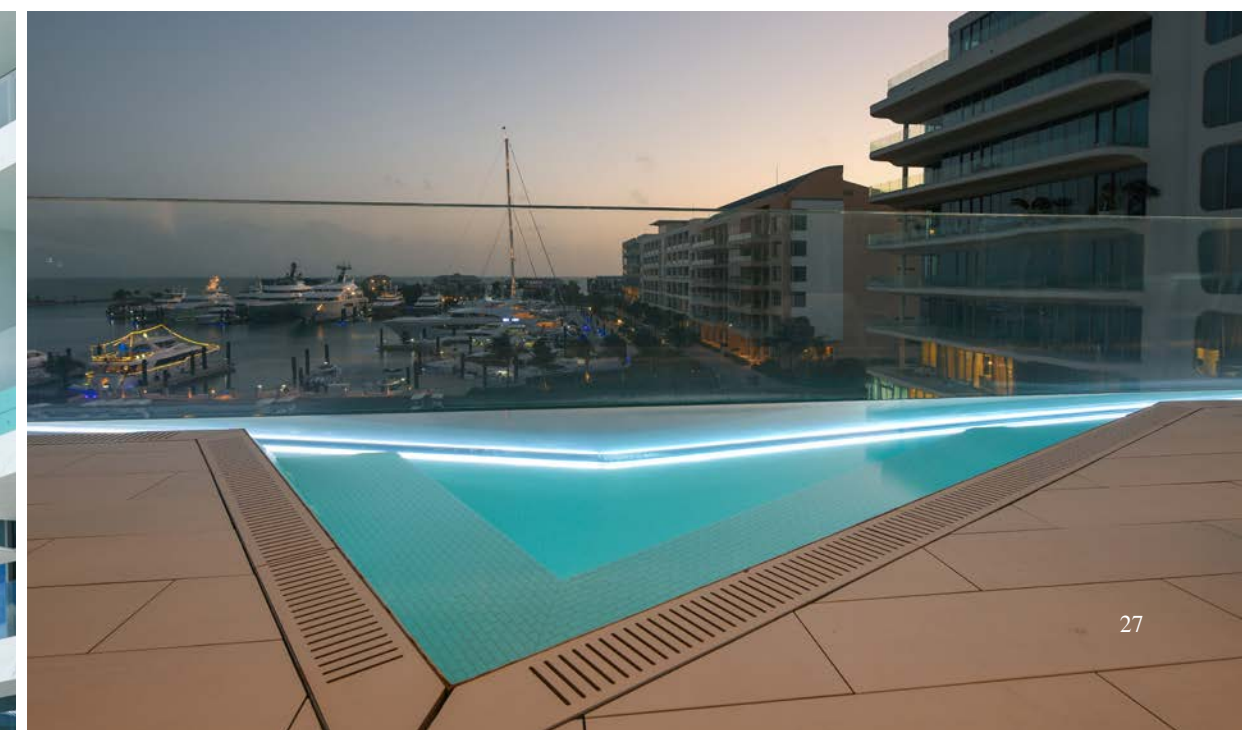
27 Stainless Steel Spas

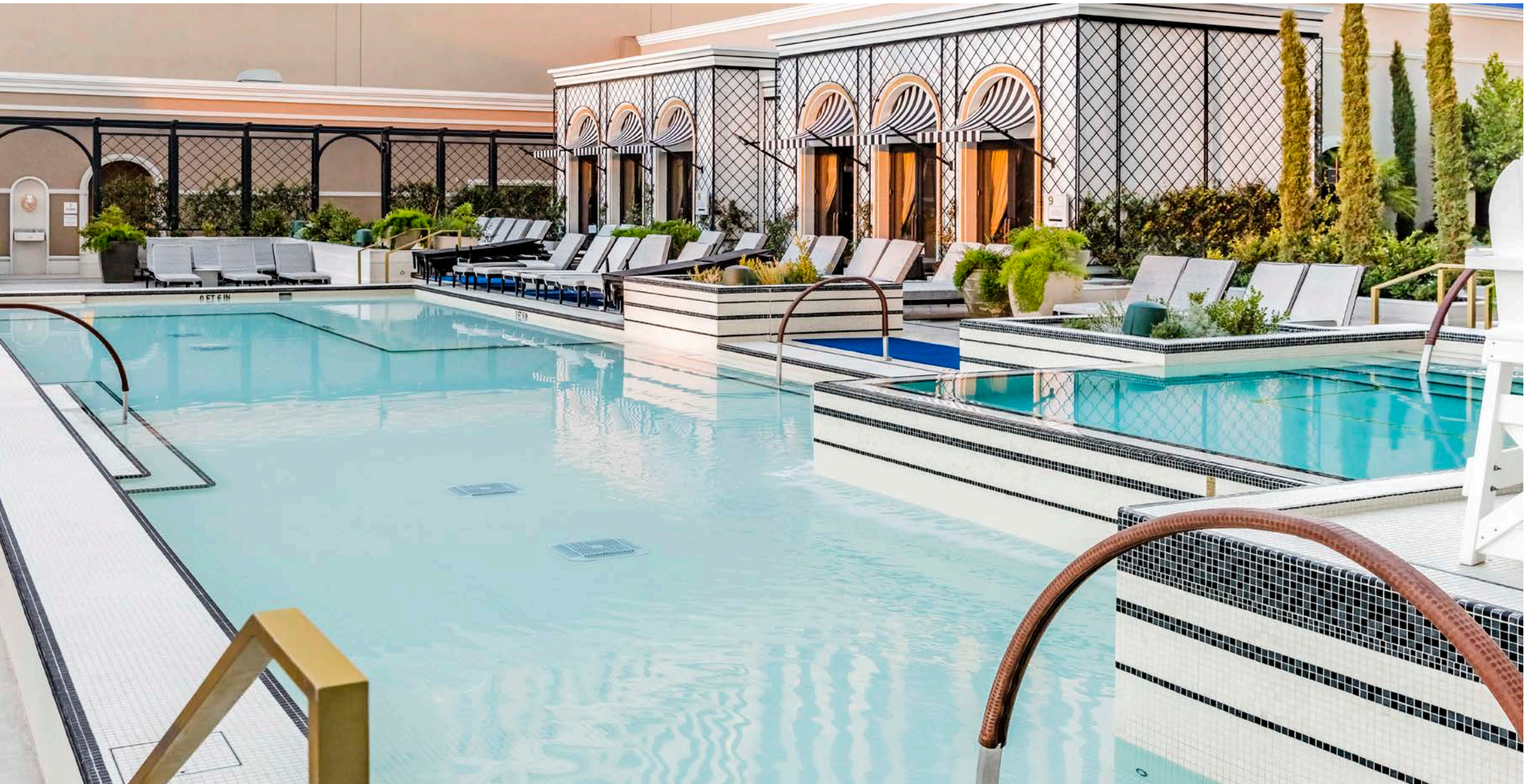
Coral

23 Acrylic-Facade Stainless Steel Spas

7 Plunge Pools

2 Acrylic-Facade Penthouse Pools



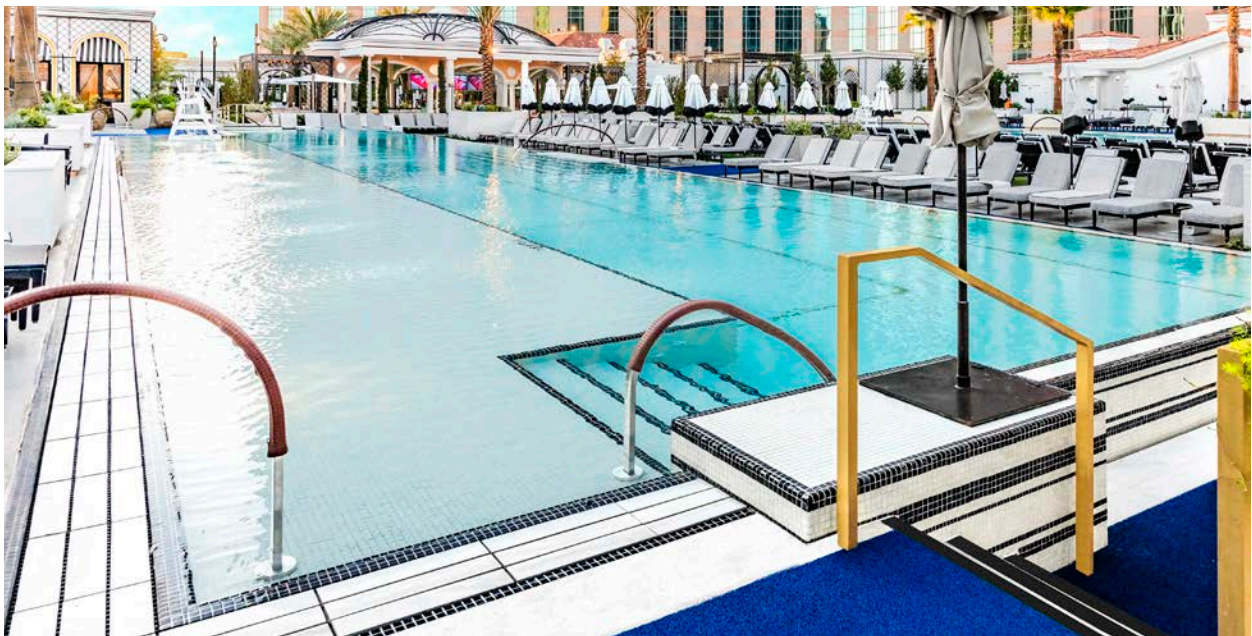


The Venetian Resort & Casino Las Vegas, Nevada

Nine Bradford stainless steel pools and spas, a water feature, and a splash pad help complete the renovated two-acre pool complex at The Venetian Las Vegas. Inspired by the Italian Riviera, the vessels, water feature, and splash pad are all finished in stunning black, white, and gold leaf glass tile. Each vessel has a unique design, footprint, and features. Sundecks, bench seating, variable depths, infinity edges, built-in planters, multi-level seating, and large swimmable areas make the vessels unique to the property. Their custom design and placement allows the seamless flow of use from the deck area to the pool.

Project Specifications

- Pool 1: 1,891 ft²
- Pool 2: 2,952 ft²
- Pool 3: 2,949 ft²
- Pool 4: 2,640 ft²
- Main Spa: 425 ft²
- 4 Cabana Spas: 103 ft² each
- Splash Pad
- Entry Water Feature



Park Grove

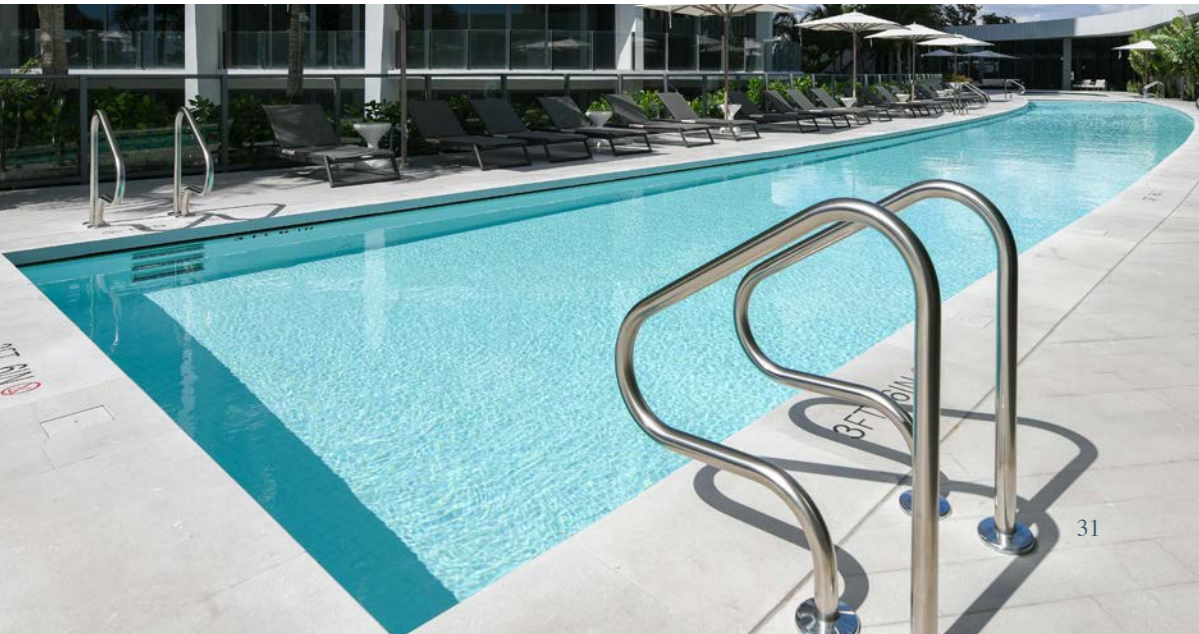
Miami, Florida

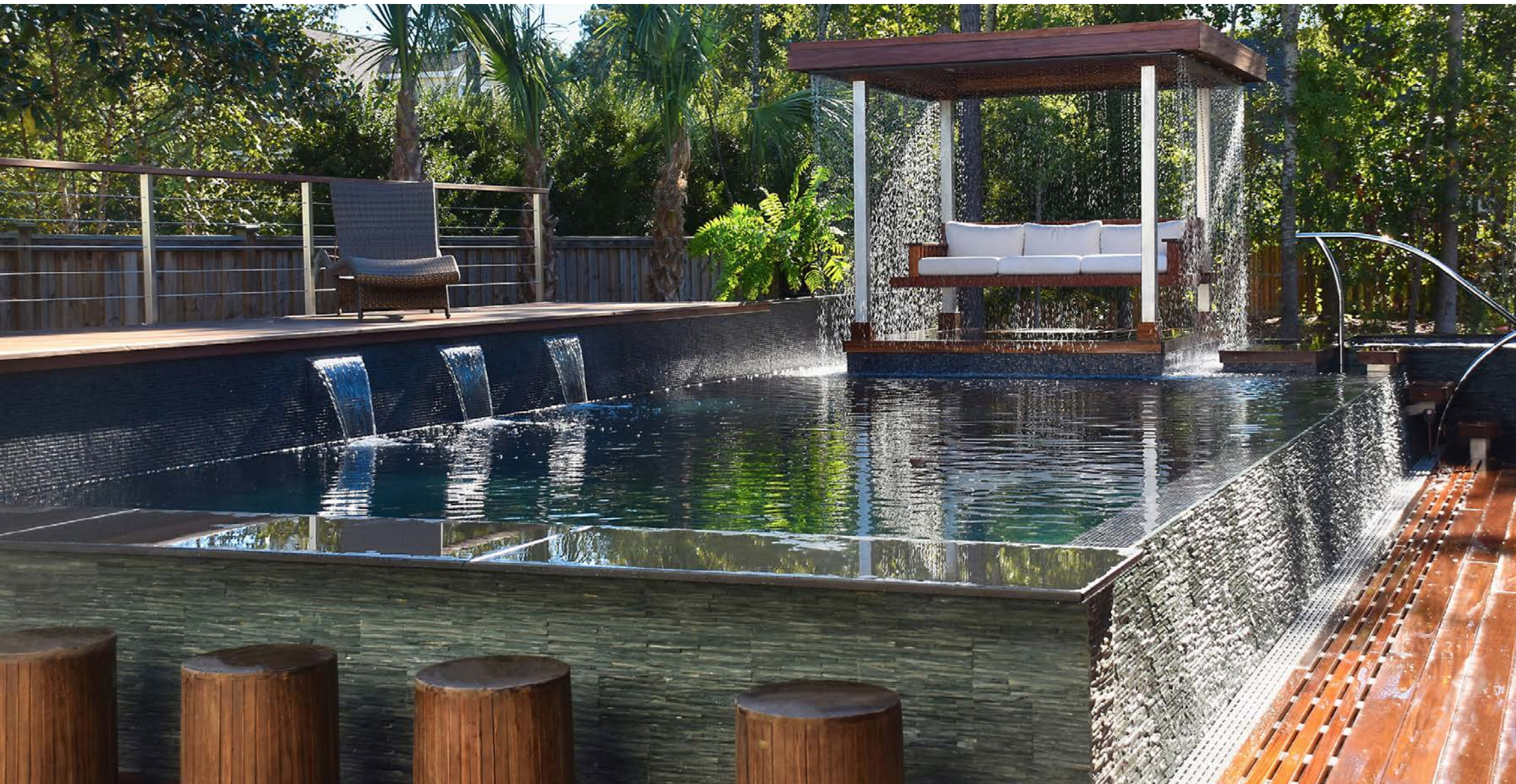
Located a few miles from downtown Miami, Park Grove is a luxury, multi-tower community tucked into the seaside enclave of Coconut Grove. The towers are staggered across the property, ensuring each residence has unobstructed views of Biscayne Bay. Designed by a team of world-renowned architects, engineers, developers, and designers, Park Grove offers residents unparalleled luxury amenities that span over five acres.

Bradford’s pools, spas, and water features are strategically installed in the amenity areas on various levels of the towers to maximize deck space and views of the bay.

Project Specifications

- Water Feature 1: 617 ft²
 - Water Feature 2: 2,047 ft²
 - Main Pool 1: 1,796 ft²
 - Main Pool 2: 2,541 ft²
 - Main Spa 1: 202 ft²
 - Rooftop Pool 1: 253 ft²
 - Rooftop Pool 2: 231 ft²
 - Rooftop Pool 3: 515 ft²
 - Rooftop Spa 1: 106 ft²
 - Rooftop Spa 2: 115 ft²
 - Rooftop Spa 3: 115 ft²
- All Vessels Finished in Full Tile





Backyard Oasis

Wilmington, North Carolina

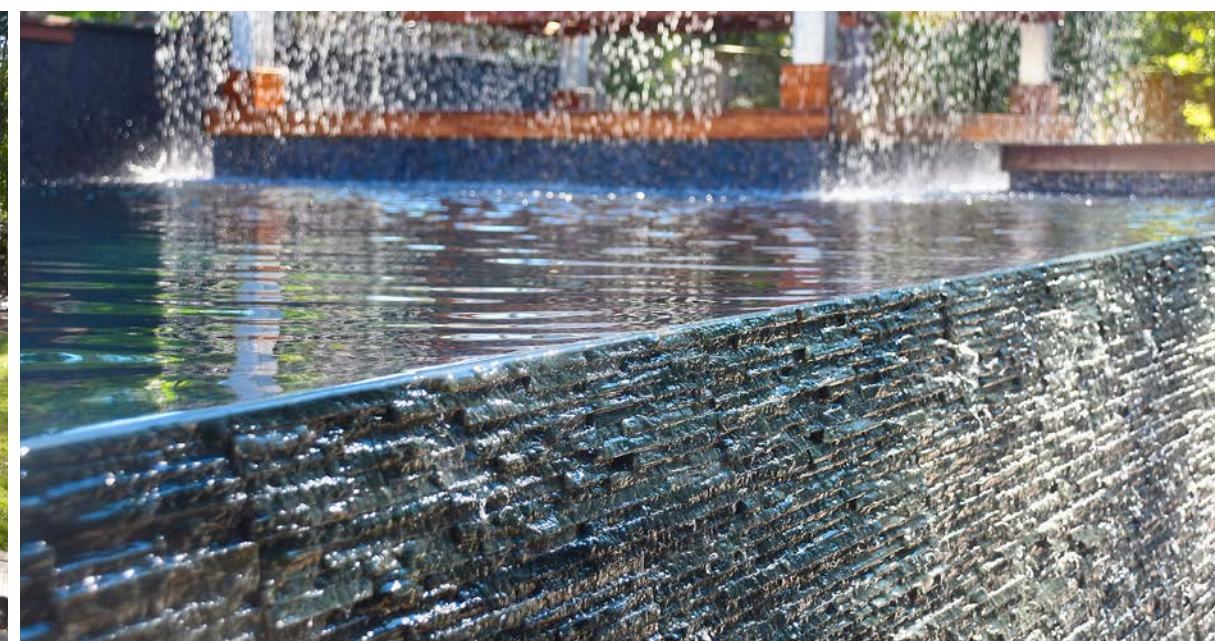
Inspired by Balinese design principals, this backyard oasis pool is a testament to versatility. A hanging daybed "Island" surrounded by a rain-curtain, creates the idyllic harmony of falling water. A swim-up bar with built-in barstools was designed at the same height as the facing deck stools, allowing the natural flow of interaction between the wet and dry spaces.

Project Features:

- Custom Spa with Built-in Lounger
- Custom Tile and Stone
- Upper Tier Sun Deck
- 37' Infinity Edge
- Swim-up Bar with 5 Built-in Barstools
- Hanging Day Bed
- Pergola with Water Curtain
- 3 Sheeting Waterfalls
- Integrated SwimSpa
- 100% Self-Supported Vessel
- On-Grade Installation

Project Specifications:

- Pool Dimensions: 34' x 10'
- Pool Volume: 14,981 gallons
- Spa Dimensions: 6' 8" x 7' 6"
- Spa Volume: 703 gallons
- Finish: Full Tile, 2" x 2" Glass



FIN Grand Cayman

George Town, Cayman Islands

This fully welded stainless steel pool spans over 50 feet, cantilevering out of the building toward the ocean. Ten transparent acrylic panels line the floor and walls of the vessel including the section cantilevered from the edge of the building. Located on the third floor, the pool's acrylic paneled bottom shines light down to the spa and exercise facility located on the floor below.

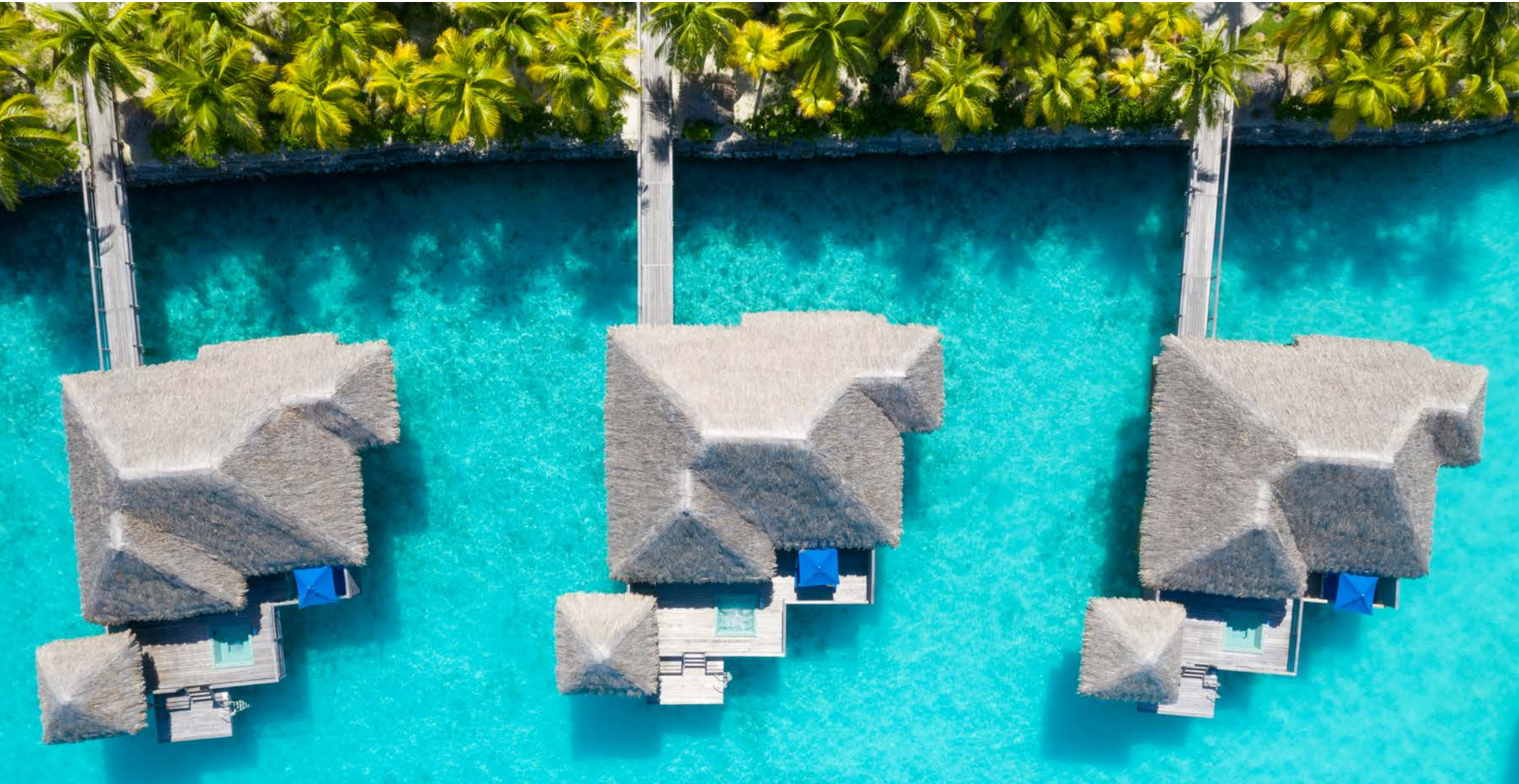
Project Features:

- All Stainless Finish
- Entry Stairs
- 6 Acrylic Floor Panels
- 4 Acrylic Wall Panels

Project Specifications:

- Pool Dimensions: 52' x 7'4"
- Pool Square Footage: 308 ft²
- Depth: 3'6"
- Volume: 8,000 gallons





St. Regis Bora Bora

Bora Bora, French Polynesia

The beach-front St. Regis Resort is located on the tropical French Polynesian island, Bora Bora. Bradford provided St. Regis Bora Bora with 19 fully tiled, stainless steel spas. The spas are installed throughout the exclusive over-water bungalows and in the resort's day spa areas.

Bradford's hard-wearing finishes and durable construction suits the harsh salt environment that the over-water bungalow spas are exposed to. The marine-grade stainless steel used in the fabrication of all Bradford vessels makes the spas naturally resistant to corrosion caused by the humid, salty ocean air found in tropical environments.

Project Specifications:

14 Full Tile Carolina (8' x 8') Spas

4 Full Tile 6' x 9' Spas

1 Full Tile 7' x 9' Spa

Open-Plan Bench Seating



The Cosmopolitan

Las Vegas, Nevada

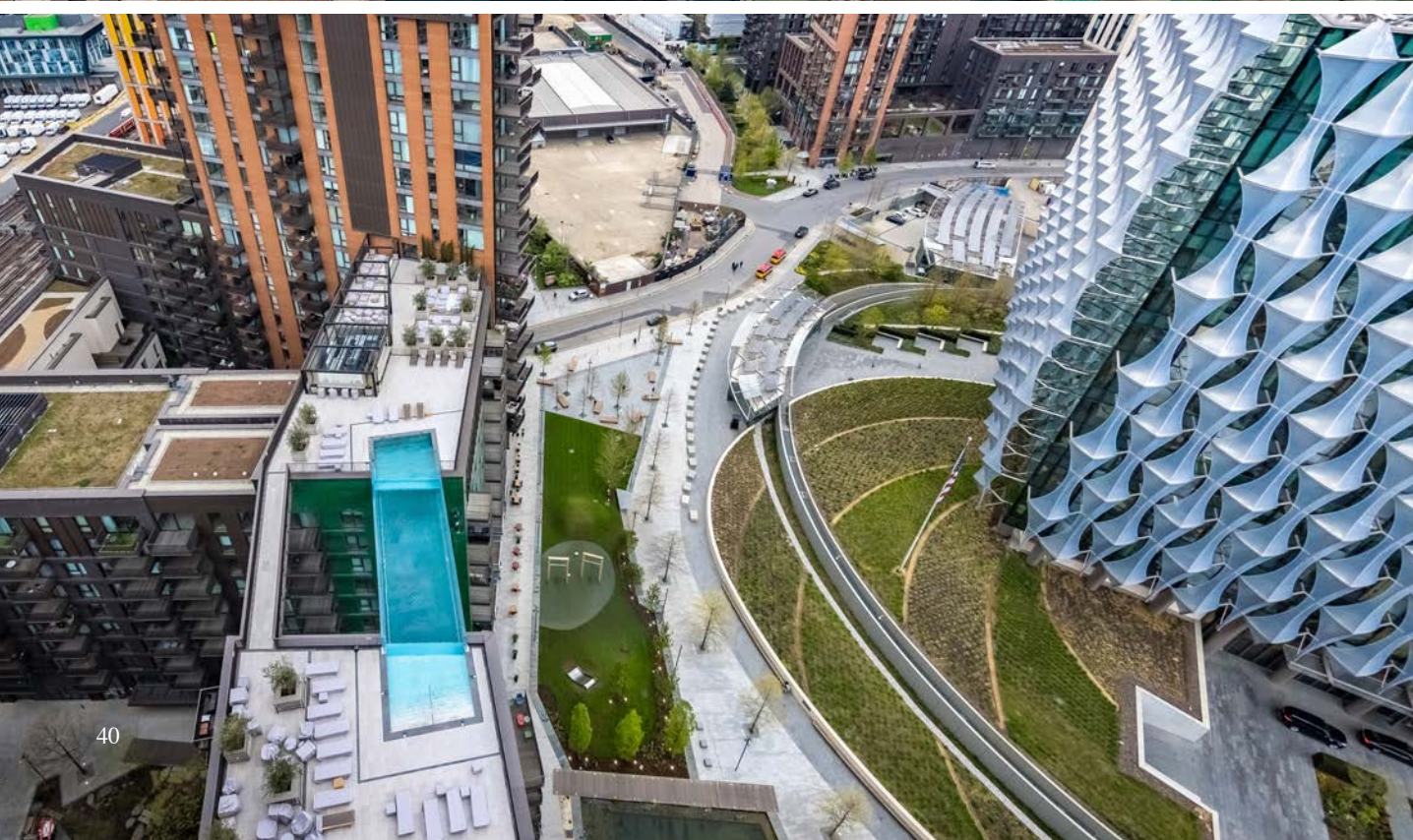
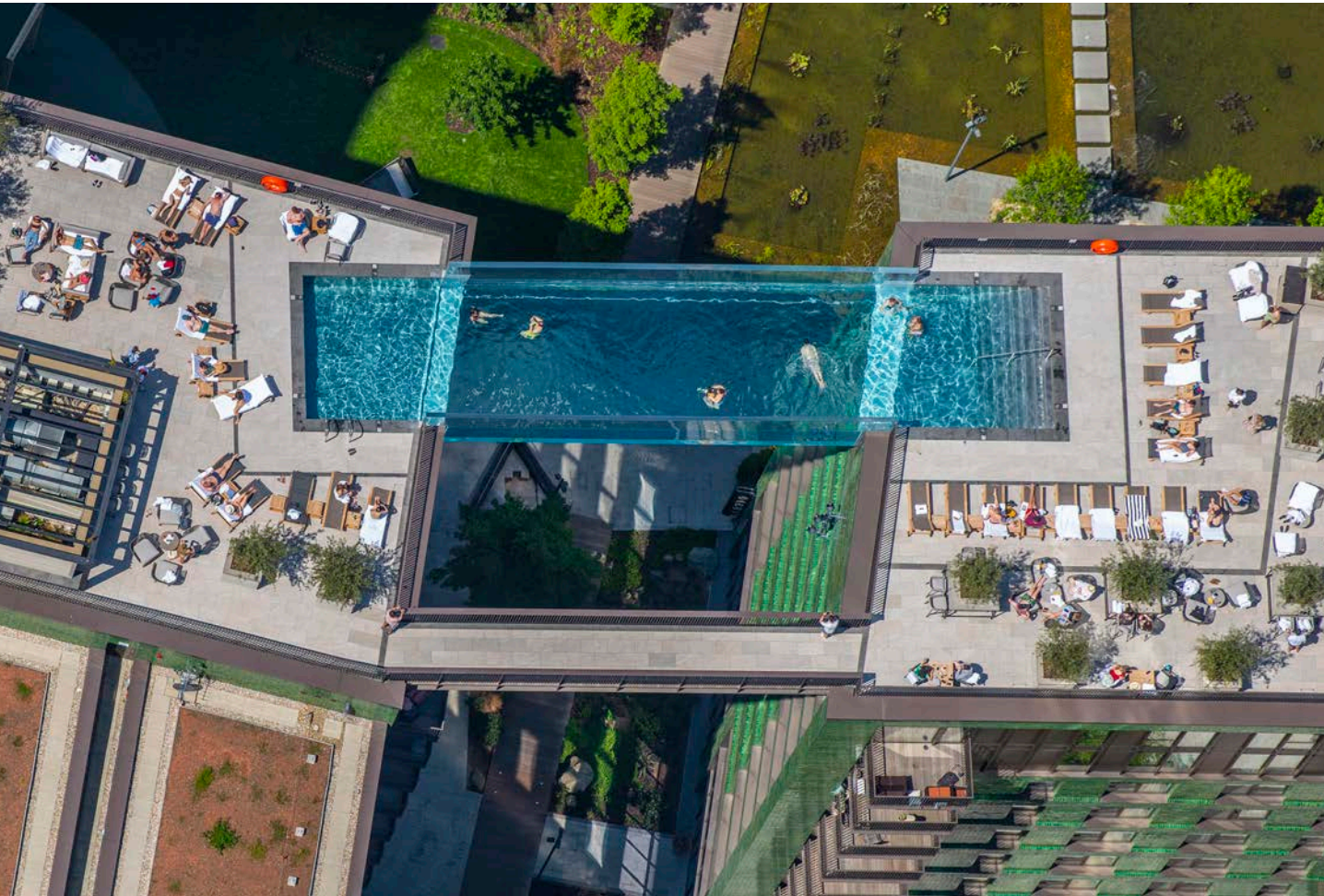
The Cosmopolitan is an award-winning hotel and casino in the heart of the Las Vegas Strip. Bradford manufactured and installed over 45 stainless steel vessels to complete their amenities selection.

A variety of Bradford's spas, pools, and water features were installed throughout the resort, casino, and the expansive Cosmopolitan Pool District. Unique to the luxury hotel and casino, this project was designed to complement the vibrant and upbeat environment of this iconic Las Vegas destination.

Project Specifications:

- Boulevard Pool: 8,504 ft²
- Boulevard Spa: 435 ft²
- Boulevard Lap Pool: 1,349 ft²
- Chelsea Pool: 5,197 ft²
- Chelsea Spa: 308 ft²
- Marquee Day Club Pool: 1,580 ft²
- Marquee Day Club Main Spa: 1,247 ft²
- Marquee Day Club VIP Spa
- 7 Acrylic-Front Cabana Spas
- 11 Bungalow Spas
- 10 Lanai Spas
- 4 Water Features
- One Treadmill Spa





The Sky Pool

Embassy Gardens

London, England

Located in London next to the US Embassy, the Sky Pool is suspended 115-feet in the air, spanning the distance between the two residential towers of Embassy Gardens. The Sky Pool is the world's first and only swimming pool of its kind.

Bradford provided two, open-ended stainless steel pool sections that cradle the acrylic and act as anchors on each rooftop. The pools, which are roughly 19' x 21', were fully fabricated in Bradford's North Carolina facility then shipped to London in two, ready-to-install pieces. The pool sections were engineered with rebates in the walls and floor to accept the 8" and 14" thick acrylic and secure it in place.

Accommodating the natural building movement, and expansion and contraction over time requires the pool to be supported by a bearing system, similar to those found on bridges. This system allows the pool to move as one unit, independent of the buildings.

Project Features:

- Dimpled Floor Stainless Steel
- Full-Width Dimpled Stainless Steel Stairs
- World's Only Fully Transparent Floating Pool

Project Specifications:

- Dimensions: 82' x 19'
- Square Footage: 1,558 ft²
- Depth: 4'
- Volume: 23,775 gallons
- Acrylic Height: 10'6"
- Acrylic Thickness: 8" and 14"

Seminole Hard Rock Tampa

Tampa, Florida

The Seminole Hard Rock Tampa Hotel and Casino is one of the largest casinos in the United States. The AAA Four Diamond-rated hotel is home to an extensive entertainment and amenities selection, and houses over 25 stainless steel pools, spas, water features, and wellness amenities by Bradford.

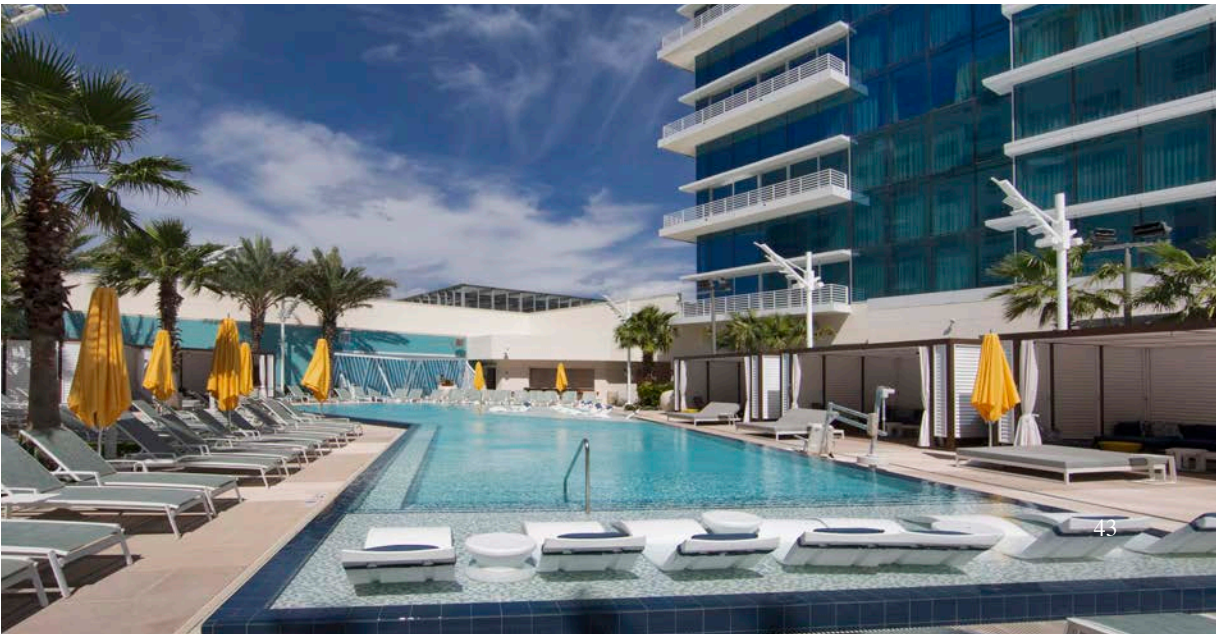
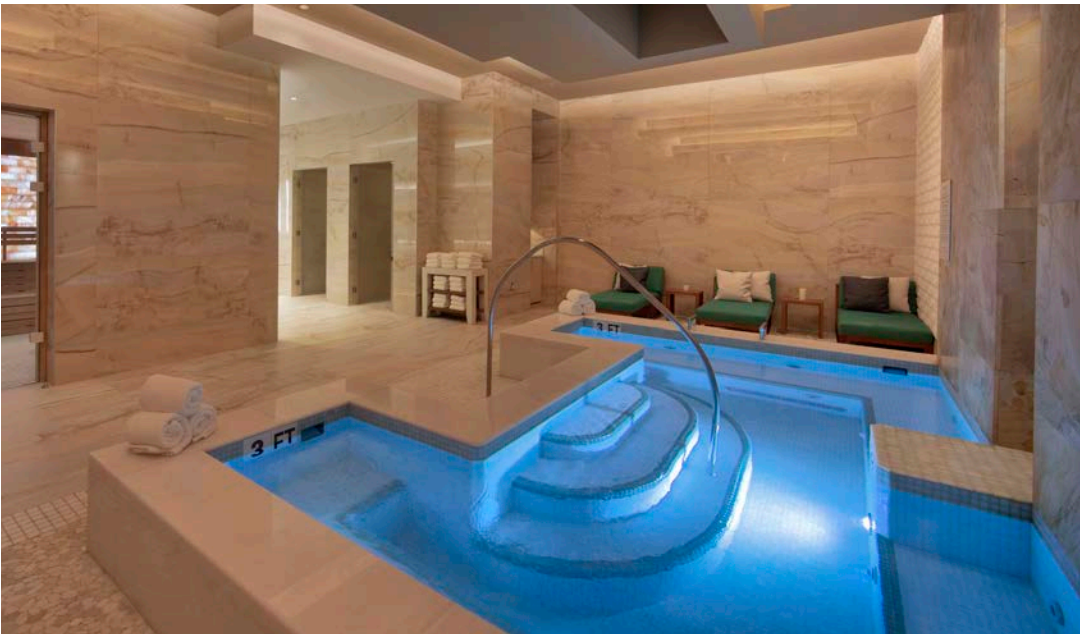
Surrounded by 500 loungers, daybeds, and 19 cabanas, Bradford's three expansive stainless steel pools are the focal point of the hotel's 1.3 acre pool deck. The pools vary in size and shape, but all feature integrated bench seating, stairs, tanning/wading ledges, custom tile blends, and raised-beam infinity edges.

Bradford Stainless Steel Vessels:

- Main Pool A: 2,714 ft²
- Main Pool B: 4,492 ft²
- VIP Pool: 2,386 ft²
- 3 Commercial Spas
- Fire & Water Feature
- 4 Water Walls
- Reflecting Pool
- Rain Curtain
- Pool Patio Rain Showers

Bradford Wellness Day Spa Amenities:

- 2 Salt Saunas
- 2 Steam Rooms
- 2 Ice Fountains
- 2 Steam Showers
- 1 Hammam





The Shipwreck

Figure 8 Island, North Carolina

Built on the site of a nearly 200-year-old shipwreck, this private residence is completely unique – creatively designed to incorporate the features and materials of a seafaring ship. Bradford custom designed and manufactured the rooftop pool to fit seamlessly into the indoor/outdoor living space.

An acrylic viewing window not only creates a point of interest, but keeps the pool from becoming an obstruction by creating an interactive space between swimmers and non-swimmers.

Project Features:

- Infinity Edge
- Bench Seating
- Acrylic Viewing Window
- Built-in Fire Feature
- 2" x 2" Glass Tile Finish
- On-Grade Rooftop Installation

Project Specifications:

- Dimensions: 18' x 10'
- Square Footage: 194.3 ft²
- Depth: 4'
- Volume: 3,559 gallons



McGregor Square

Denver, Colorado

Owned by the Colorado Rockies, McGregor Square is a 659,000sqft development designed as an extension of the ball-park experience, adjacent to Coors Field and open year round. Bradford supplied a stainless steel pool and spa to the rooftop amenity deck.

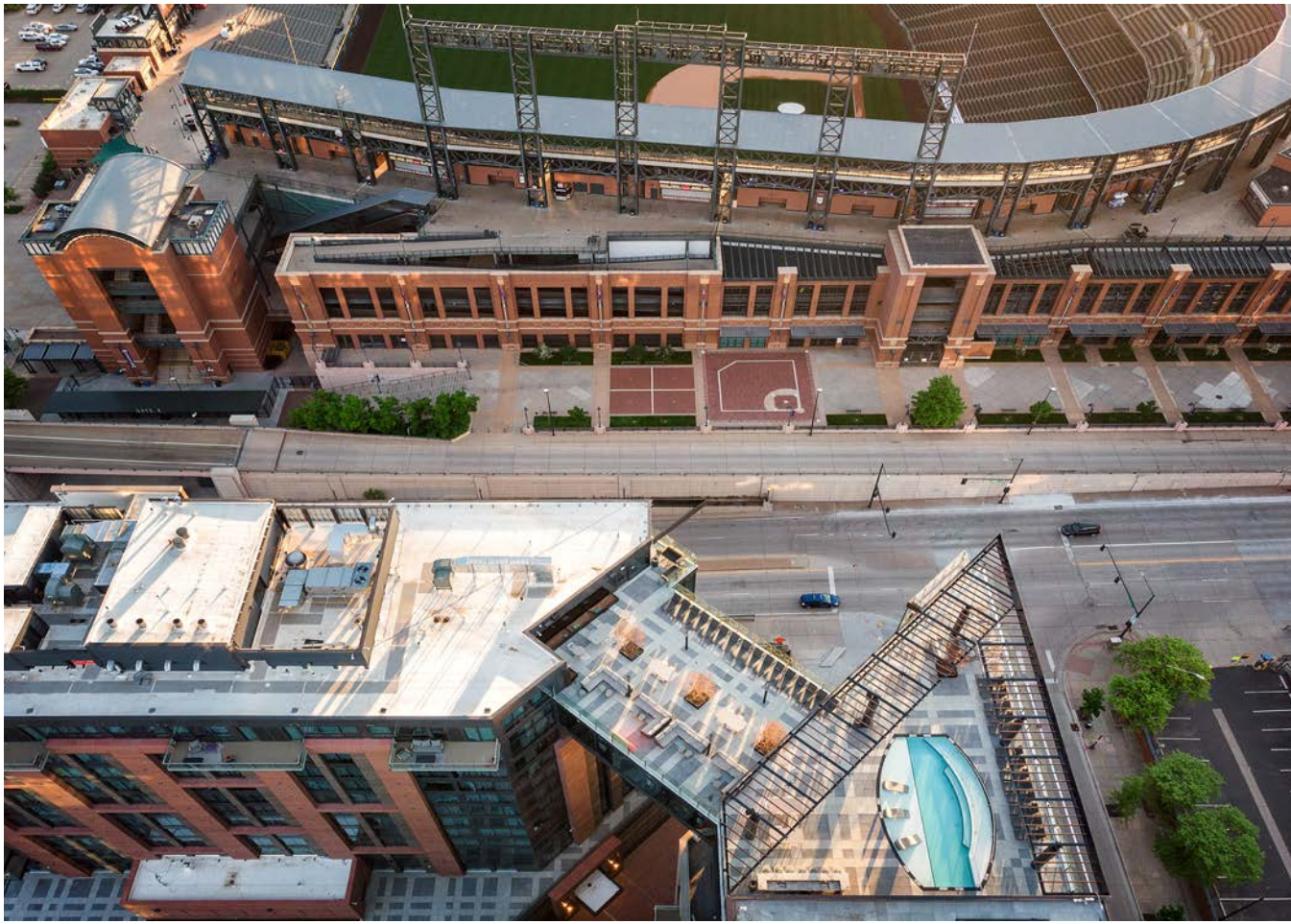
The Rally Hotel and McGregor Square Residences share access to the Skybridge amenity deck which gives guests and residents views of the Rocky Mountains, downtown Denver and Coors Field.

Project Features:

- Integrated Zero Entry Ramp
- Curved Bench Seating
- Tanning Ledge
- Tension Edge Pool
- Raised Skimmer Spa
- Custom Blended Tile
- Rooftop Installation

Project Specifications:

- Pool Dimensions: 38' x 24'6"
- Pool Square Footage: 651 ft²
- Pool Volume: 9,424 gallons
- Spa Dimensions: 8'6" x 12'6"
- Spa Square Footage: 86 ft²
- Spa Volume: 1,415 gallons
- Finish: Full Tile - Custom Blend





Coastal Retreat

Wilmington, North Carolina

With a captivating view of the Intracoastal Waterway, this Bradford pool seamlessly fits the open floor plan of the home while maintaining the integrity of the unbroken water views. There is an intentional uninterrupted flow from the home to the deck to the pool to the waterway in the distance. The pool's infinity edge keeps the flow of the home moving beyond the space it occupies.

Because the home is located directly on the water and there was no access from the sides, the only way to get the pool to its location was to crane it up and over the house. We were able to install their pool in a place that was virtually inaccessible to a traditional pool builder.

- Project Features:**
- Two-sided Infinity Edge
 - Integrated, Ergonomic Double Lounger
 - Bench Seat
 - Baja Sun Deck
 - Custom LED Package
 - Raised Spa
 - Tile Trim Finish
 - Elevated, Podium Installation

- Project Specifications:**
- Pool Dimensions: 22' x 13'
 - Pool Volume: 4,608 gallons
 - Spa Dimensions: 7' x 7'
 - Spa Volume: 324 gallons



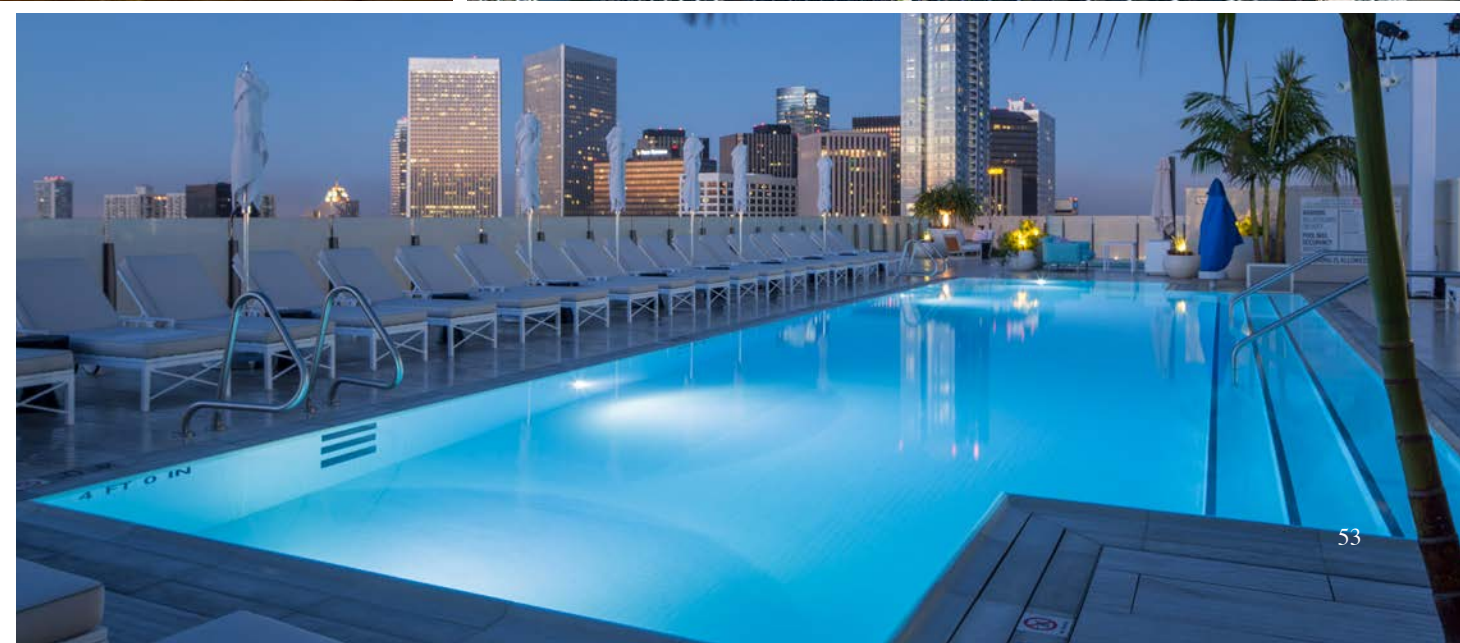
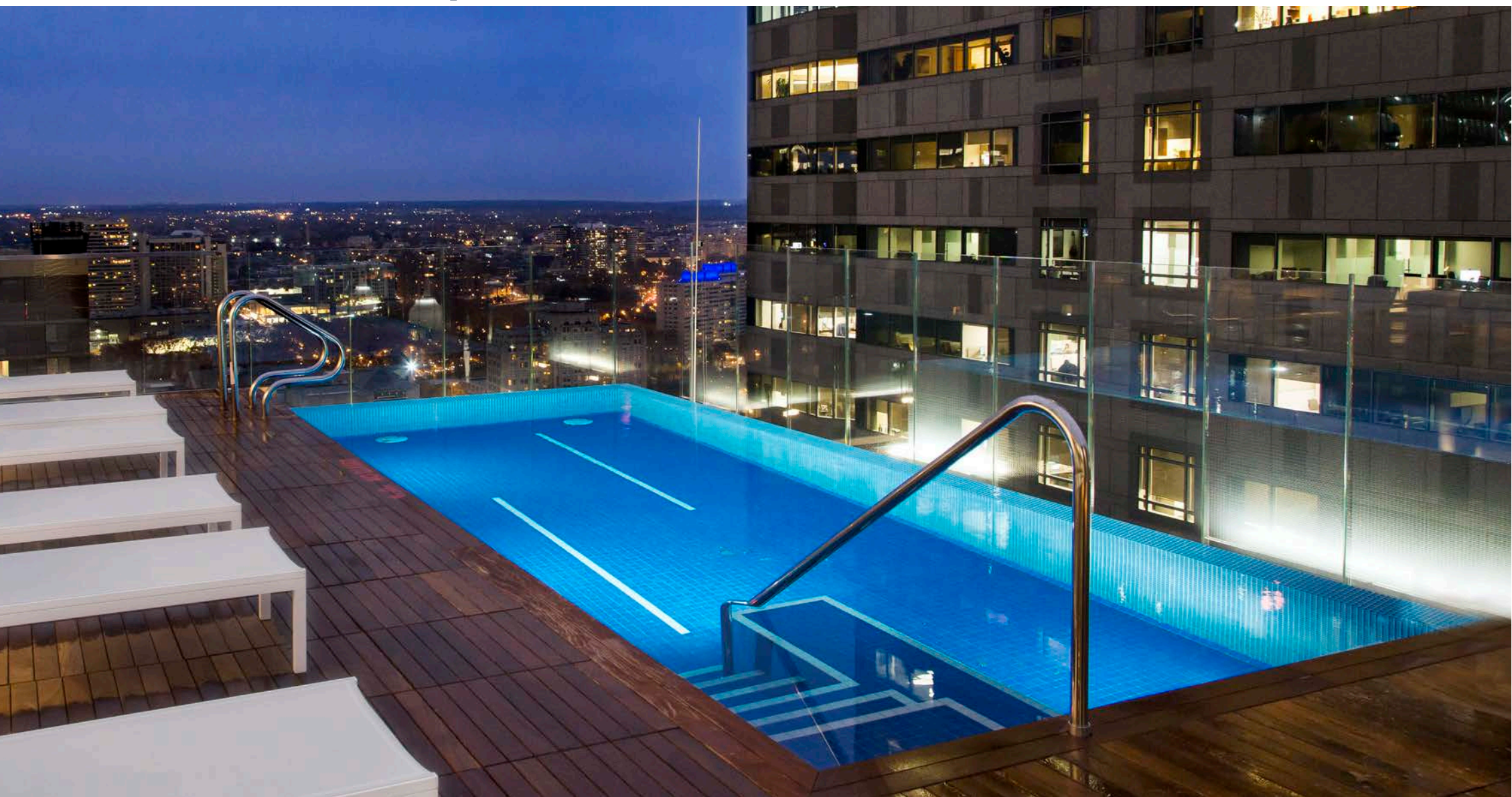
Product Gallery



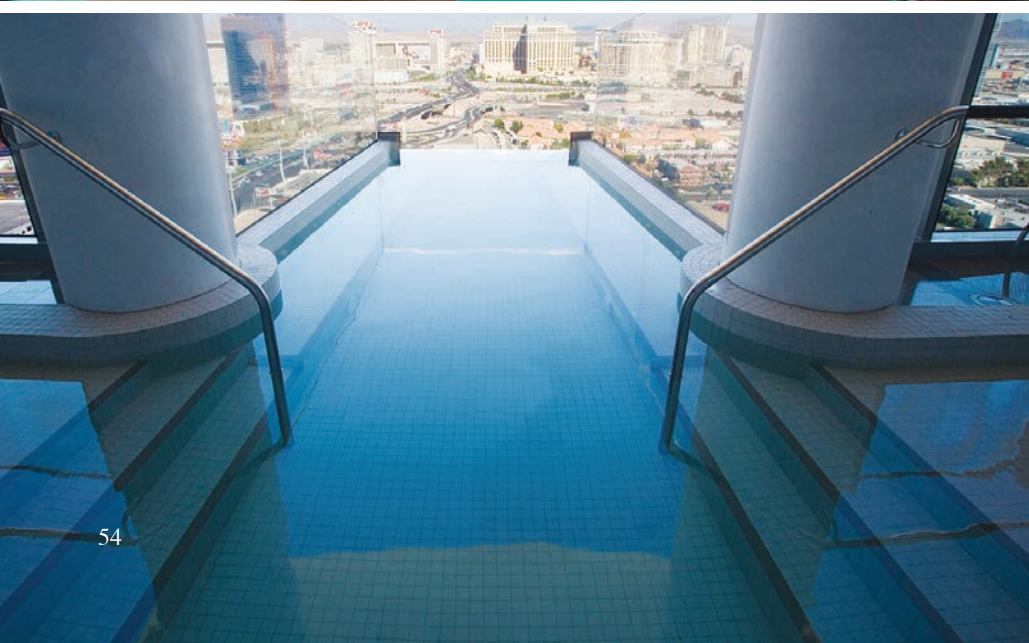
Our Products

Elevated/Rooftop
Specialty/Acrylic
Custom Residential
Vitality/Hydrotherapy
Modular Panel System
Indoor Aquatics
Water | FX & Fire | FX
Heated Loungers

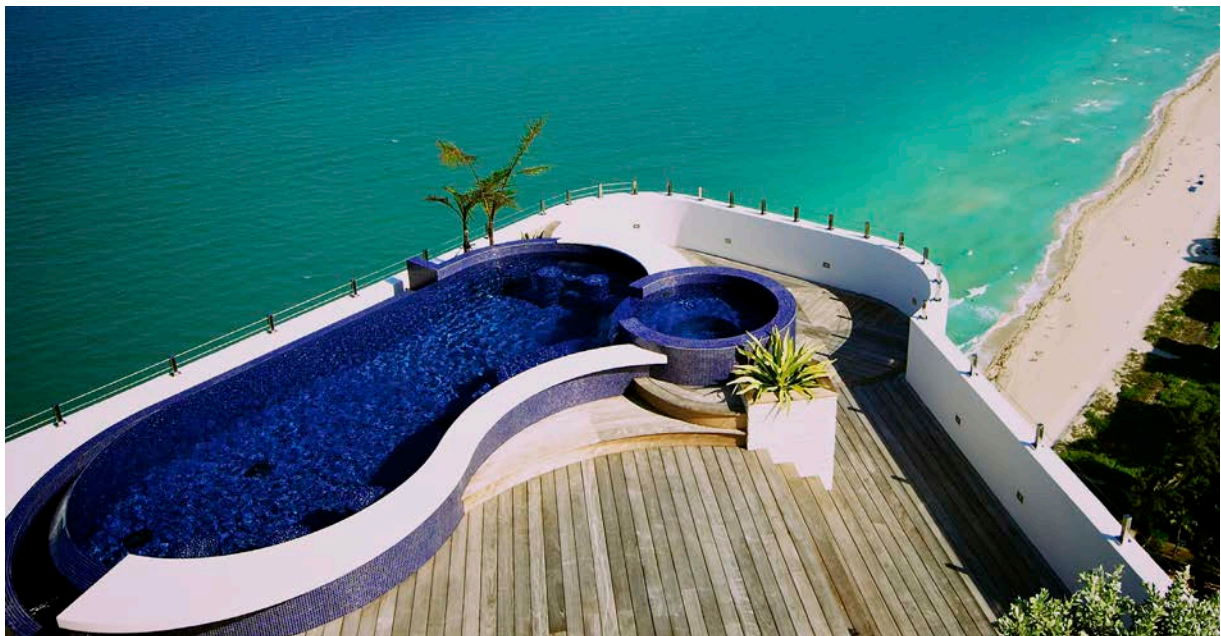
Elevated/Rooftop



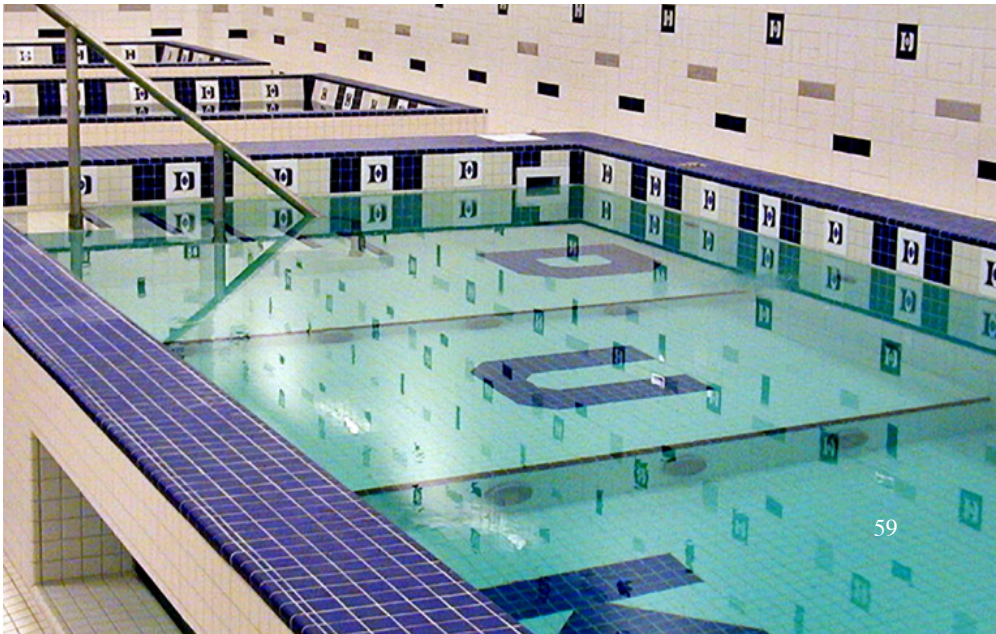
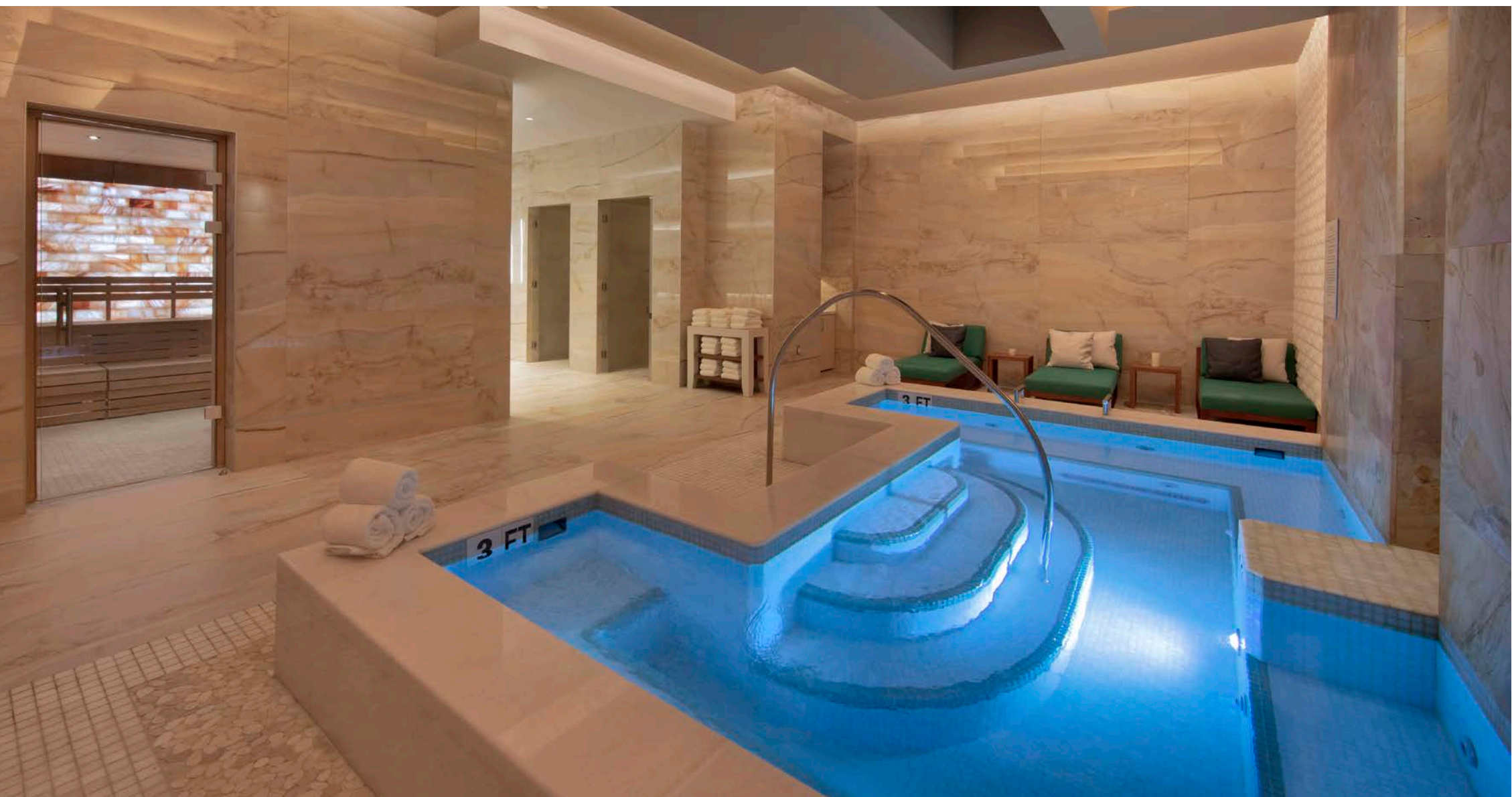
Specialty/Acrylic



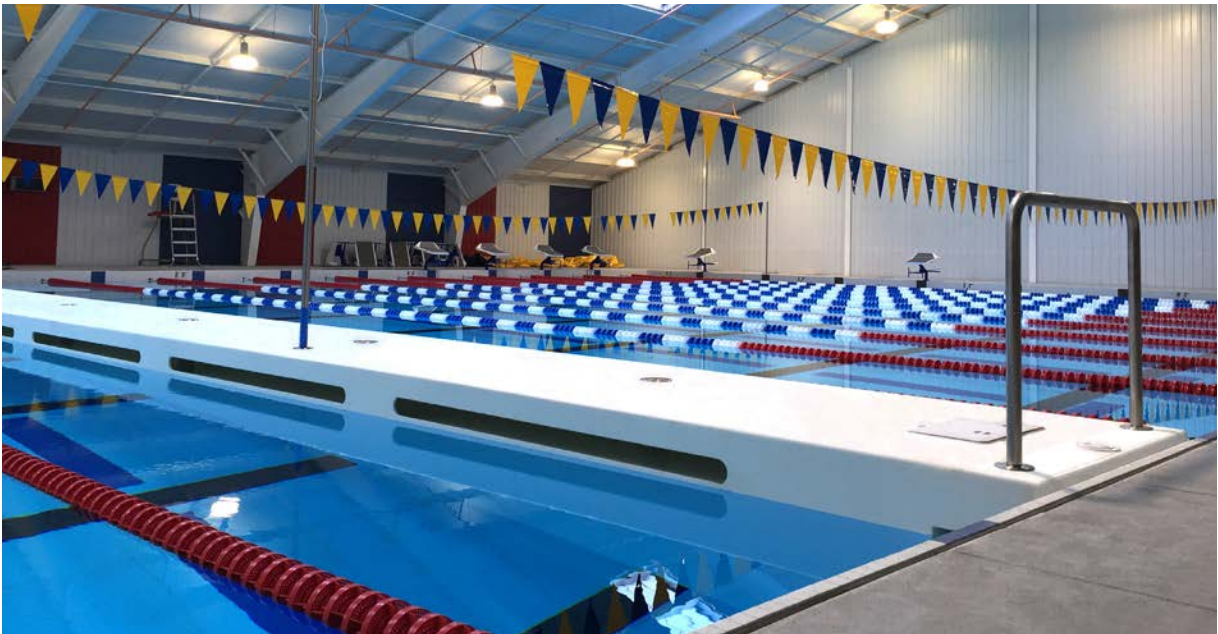
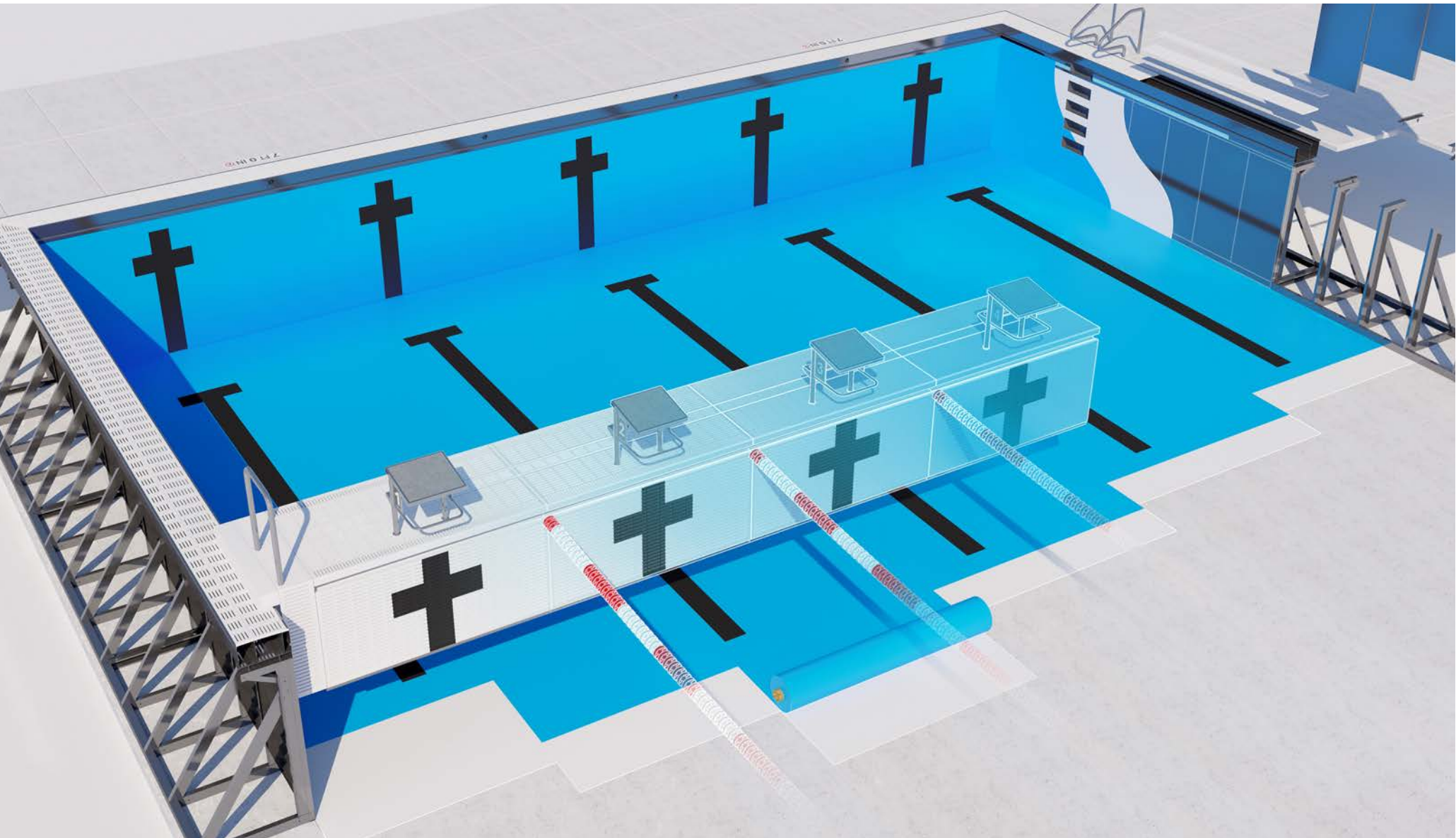
Custom Residential



Vitality/Hydrotherapy



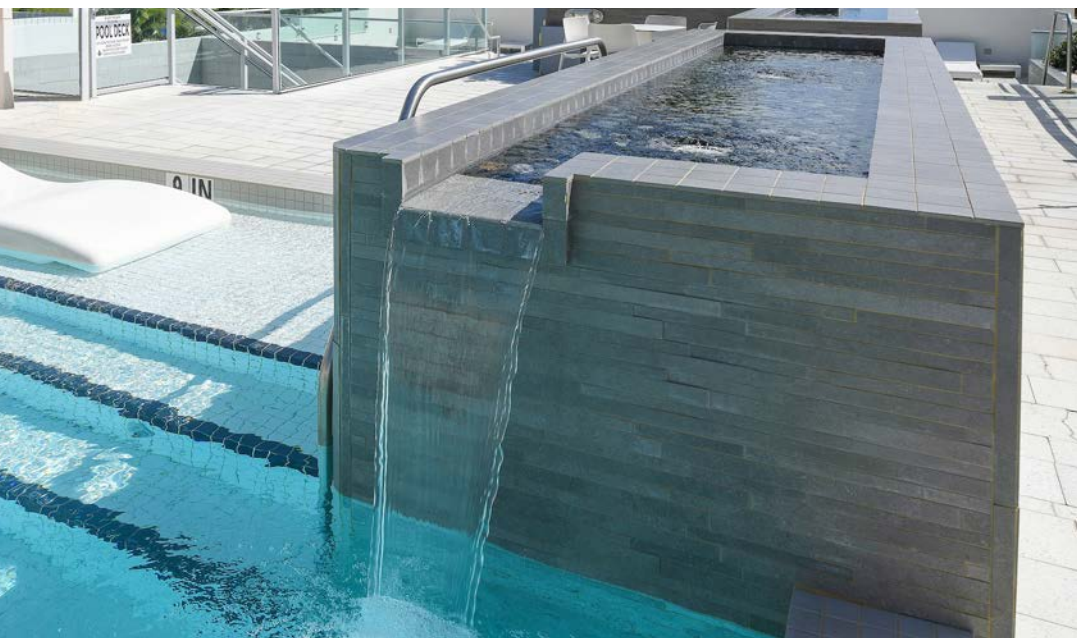
Modular Panel System



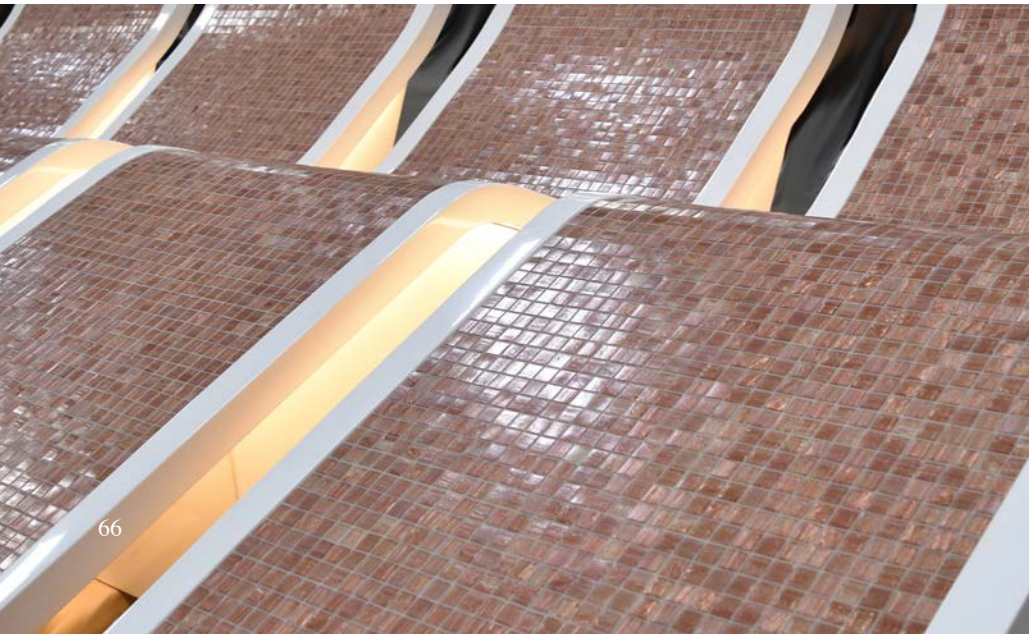
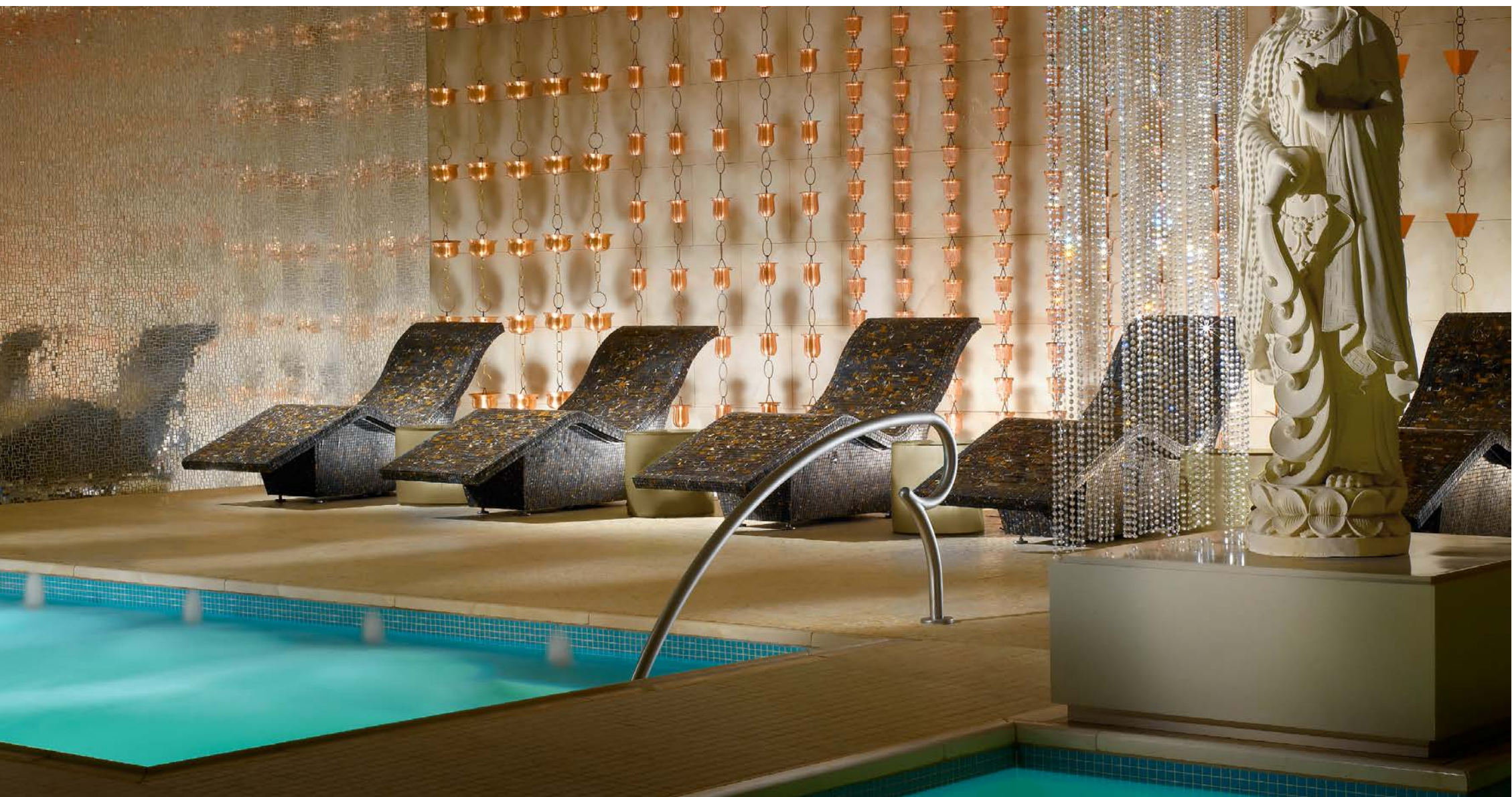
Indoor



Water|FX & Fire|FX



Heated Loungers





Nothing swims like stainless.

For over 40 years we have provided high quality, fully welded stainless steel pools and spas to the finest residences and luxury commercial facilities throughout the world. From world-renowned resorts in Sydney, Australia to Wilmington, North Carolina.

Since 1982, our mission and our promise has remained the same; we build the most beautiful and trusted pools in the world. Our sensational products echo our legacy; dedicated, trusted and respected.



BRADFORD

BRADFORDPRODUCTS.COM

| 1 910 791 2202

