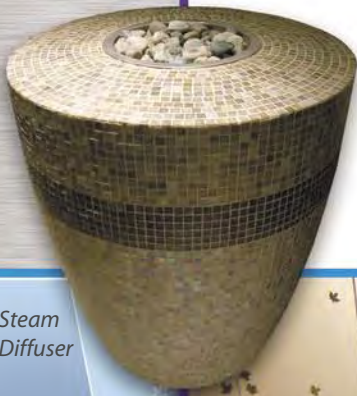


Bradford Products

AMERICA'S MANUFACTURER
OF STAINLESS STEEL AQUATIC VESSELS



Steam
Diffuser



SpaEXPERIENCE



*High quality aquatic vessels paired with exceptional customer support make
"The Bradford SpaExperience" unlike any other!*

CELEBRATING
1982 **25** 2007
YEARS



BRADFORDPRODUCTS.COM

Ice Fountain

Used after any thermal treatment, ice from the sensor-activated ice fountain is applied directly to the body, increasing blood circulation and providing a rapid cool-down effect.



Ice Fountain



Caldarium & Steam Diffuser



*The "Grace"
Heated Lounger*

Heated Lounger

Exquisite lines and an elegant finish inspired the "Grace" heated lounger's name. The ergonomic design provides comfortable support for a wide range of body types. Radiant heat warms the luxurious surface tile, while integrated LED bullet lights and iPod jack provide the "special touches" that set this lounger, like all Bradford Products, far above its competitors.

Relaxation Rooms

Imagination and engineering combine to create truly unique relaxation rooms. Choose from existing styles and treatments or create your own. Customization is available to suit all floorplans and specific applications. Some popular themes are based on the following:

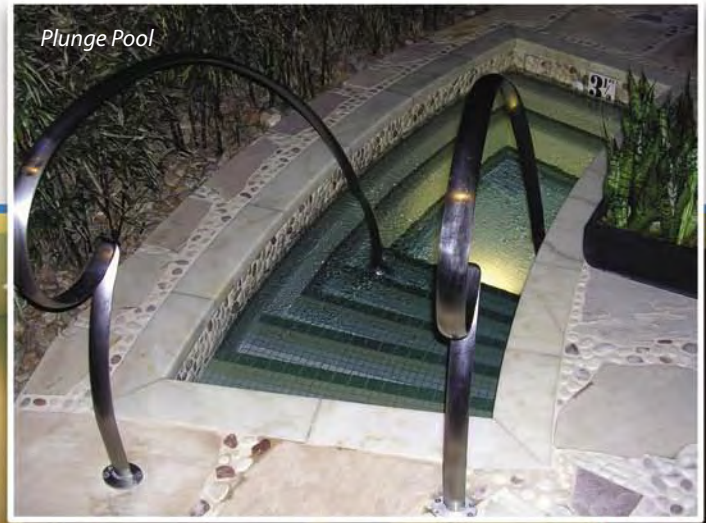
Hamam - With temperate heat and moderate to high humidity, this room draws its heritage from communal Turkish steam baths.

Laconium - Styled on a traditional Roman sauna, this room operates at a dry temperature between 163–176°F (73–80°C).

Caldarium - This room has a temperature range of 107–113°F (42–45°C) with the addition of electronically released aromatic essences.

Rasul - Mineral-rich mud coats the body, dries, is rehydrated in the Rasul and then washed away.

Bradford Products has a well-earned reputation of being America's leading manufacturer of stainless steel and ceramic tile aquatic vessels. Our luxury products for day spas, health centers and homes provide the ultimate relaxation experience and long lasting durability.



Watsu Pool

Watsu treatment combines the concepts of hydrotherapy and shiatsu, a type of Japanese massage centered around the body's pressure points. Water is an essential element to this revolutionary method because it allows the spine to move in ways that are impossible on land. Ease of installation makes Bradford Products' Watsu pool ideal for a new spa or for an established spa that is ready to update to the newest industry trends. Add LED, fibre optic or color wheel lighting for chromotherapy.

Plunge Pool

Also known as a Roman pool, a hot or cold plunge pool is well-suited for use in any spa setting. A cold plunge is traditionally taken after a spa, sauna, SteamRoom® or similar thermal treatment to close the pores and to stimulate circulation, strengthening the immune system. Hot water rids the skin of toxins and free radicals, then cold water closes the pores and refreshes the skin. Plunge pools are typically smaller in size and used for brief periods of immersion; therefore, no seating is needed.

Thalasso Pool

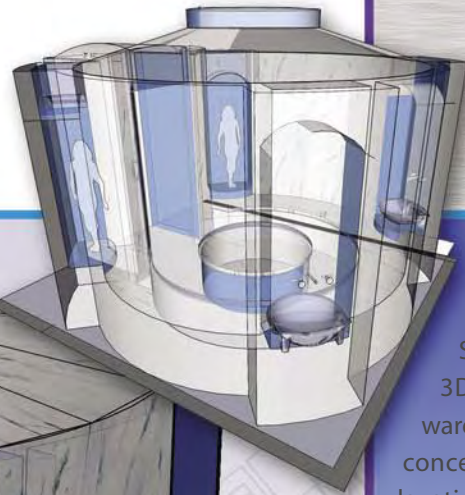
Derived from the Greek word "Thalassa," meaning "the sea," Thalasso is a concentrated seawater treatment. The higher content of mineral salts provides significantly more buoyancy than that of fresh water, making the bather feel lighter and float easily. These beneficial healing salts combined with massage jets, bubble loungers and other water features relax and rejuvenate the body.

Our Environment

Stainless steel is one of the most environmentally responsible materials used in manufacturing today. At the end of its long life cycle, a stainless steel vessel will be 100% recyclable. The self-healing layer on the metal's surface ensures that no environmentally hazardous protective coatings are needed. Stainless steel demands minimal maintenance compared to other typical finish materials; significantly less chemical cleaners and treatments are required. Leaving a minimal mark on our environment lets us call our products truly "stainless."

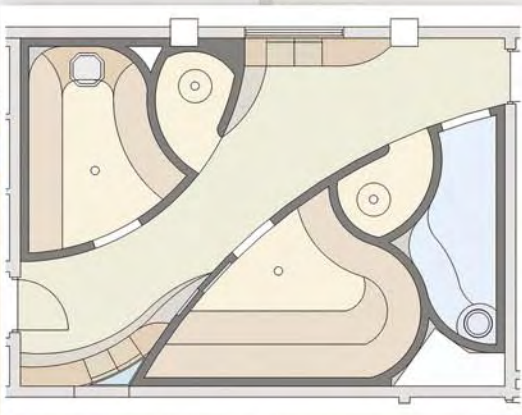
Custom Design

A personal approach to every project enables us to give our customers exactly what they are looking for. Our team of designers, engineers and skilled fabricators are ready to turn your ideas into a reality!



Design & Technology

State of the art 3D rendering software allows us to fully conceptualize your relaxation room or stainless steel aquatic vessel before production begins. At this stage, you may explore the many options for lighting, finishes and fixtures before committing to a final design scheme. Upon initial approval, a conceptual 3D model is routed to our in-house engineering department. Here, CAD drawings are produced, submitted for customer approval, and fabrication can begin.



Spa Consultation

Bradford Products can provide creative direction on the theme, layout, treatments, and design for your spa. Our SpaExperience team has over 30 years of knowledge in design and manufacturing and is eager to help you achieve your unique business goals.

Also available from Bradford Products

Swimming Pools • Hot Tubs & Vitality Tubs • Water Features • SwimSpas® • Hydrotherapy Vessels

For more information, visit us online at...

www.bradfordproducts.com

or call toll free on... **800 438 1669** EST



BRADFORD | PRODUCTS®

"America's Manufacturer of Stainless Steel Aquatic Vessels"